

Dental Catalog



Ritter Dental: More than 135 years in dental experience.



Product Range



The German Frank Ritter – founder of Ritter Dental and inventor of the first Dental Unit.



In 1887, Frank Ritter produced one of the world's first treatment chairs for the dental profession. In the 130 years since, Ritter Dental has produced a long line of products that has changed the face of dentistry.

1912 Ritter Dental introduced the "control panel" for the dental instruments, a major advancement and the beginning of modern technology in dentistry. In 1917 Ritter Dental introduced the integrated treatment system; chair with control panel, drill, cuspidor, saliva ejector, tray table and air/water syringes – all instruments in one unit.

This system delivered for the first time the modern dental system, the core concept which has not changed even today.



First Dental Chair / about 1900



Dental Unit Vanguard



Dental Unit Vanguard Smart



Curing Light



Scaler



Micromotor



Intraoral Cam



Imaging



Compressors and Suction



Autoclav

Dental Polymer Pain Protection by **DentaKOTE**



Dental Instruments by **USTOMED®**

Dental Implants by **Ritter Implants**



Vanguard Smart

Electric
Chair Only

Chair Features

- Electric movement for smooth, quiet positioning
- Ergonomic design for comfortable seating during long treatments
- Broad space for dentist's legs
- High-quality seamless upholstery
- Auto return function:
Safety switches
If the safety switch is activated, the chair automatically moves up a few inches.
- Trendelenburg movement:
Seat and backrest movement synchronized
- Left and right armrest
- Double-articulated headrest



Vanguard Smart **Dental Chair**



Foot control for
chair movements

Vanguard Smart

Electric
Chair Only

Features and options Vanguard Smart Chair only

● STANDARD ○ OPTION

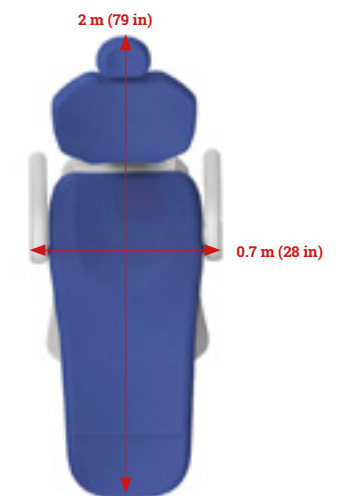
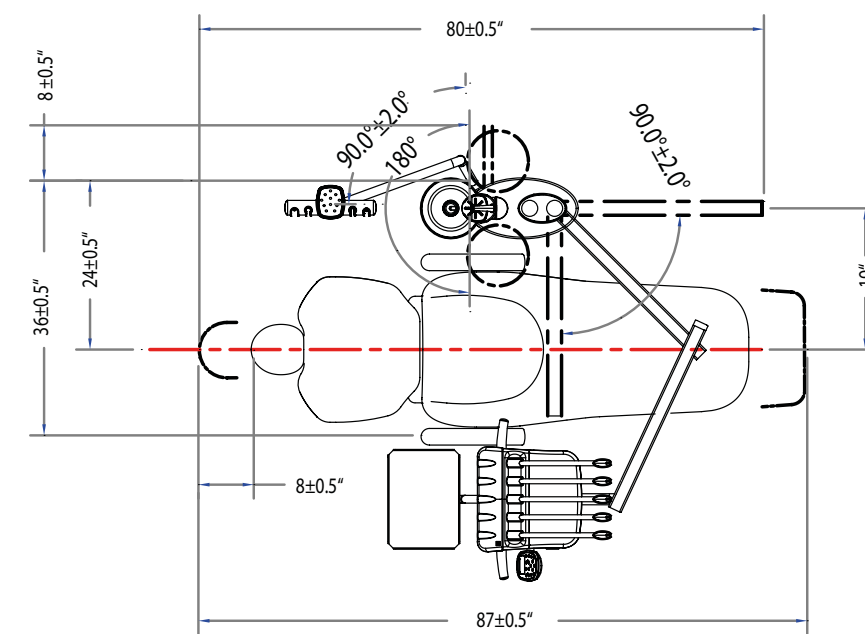
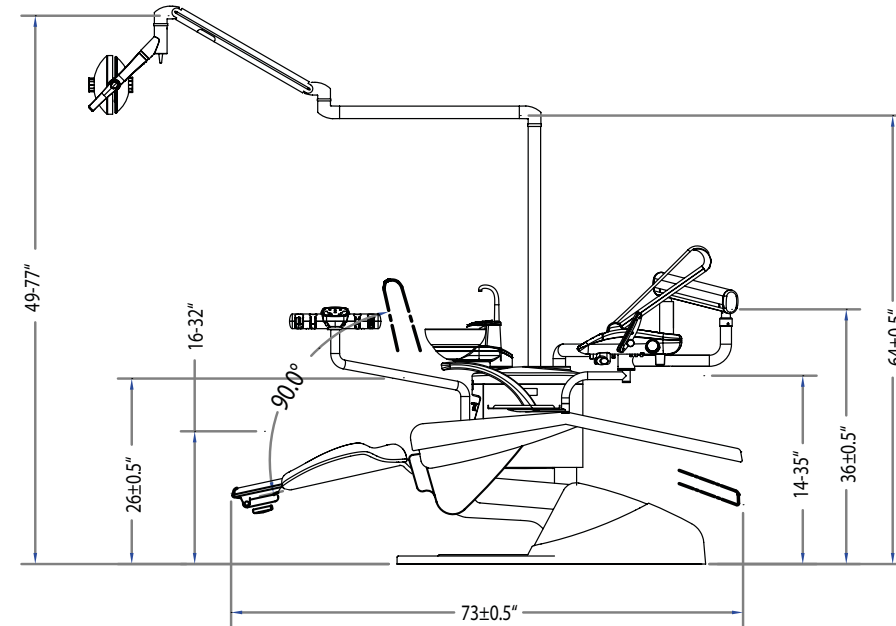
Patient Chair

- Trendelenburg movement ●
- Safety switch ●
- Double articulating headrest ●
- Left and right armrest ●
- Foot controller ●
- Seamless upholstery ●
- Upgraded upholstery ○
(Patient Chair and two Stools)

Allow 90 days for delivery of optional equipment.

Optimum use of space

The Vanguard Smart Chair is well suited for smaller operatories where limited space is available.



Vanguard

Electric or Hydraulic
Chair Only

Ritter Dental™

Chair Features

- Electric or Hydraulic chair movement for fast and quiet positioning
- Ergonomic design for comfortable seating during long treatments
- Broad space for dentist's legs
- High-quality seamless upholstery
- Chair swivel 30° left/right
- Programmable chair positions, plus last "position recall"
- Auto return function:
Safety switches
If the safety switch is activated, the chair automatically goes up a few inches
- Trendelenburg movement:
Seat and backrest movement synchronized
- Left and right armrest
- Double-articulated headrest

Vanguard Dental Chair



Foot control for
chair movements

Made by Ritter Dental
GERMANY

Features and options Vanguard Chair only

- STANDARD
- OPTION

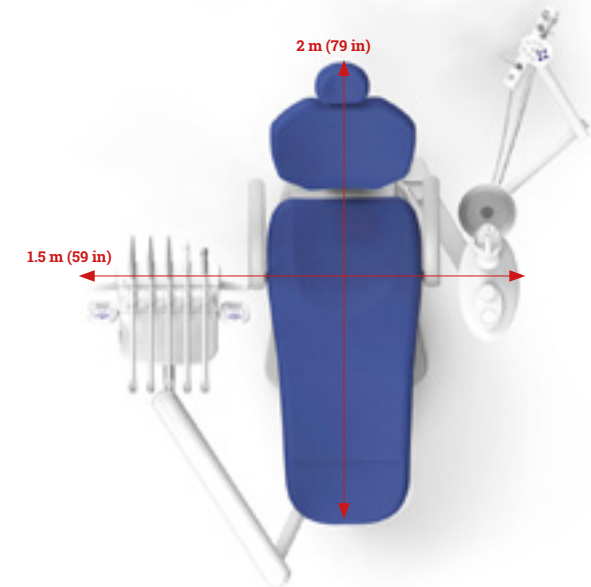
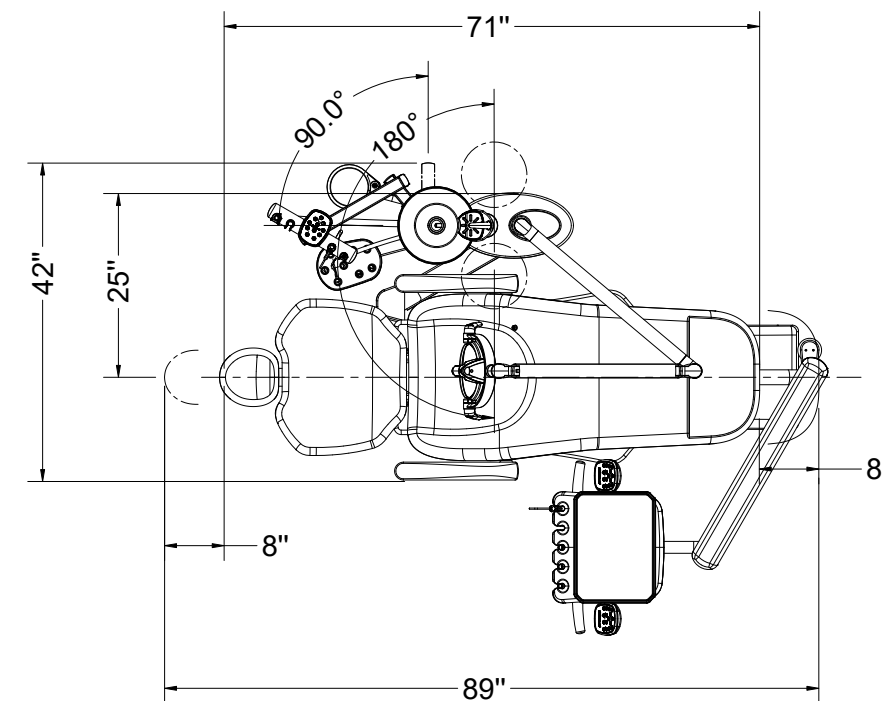
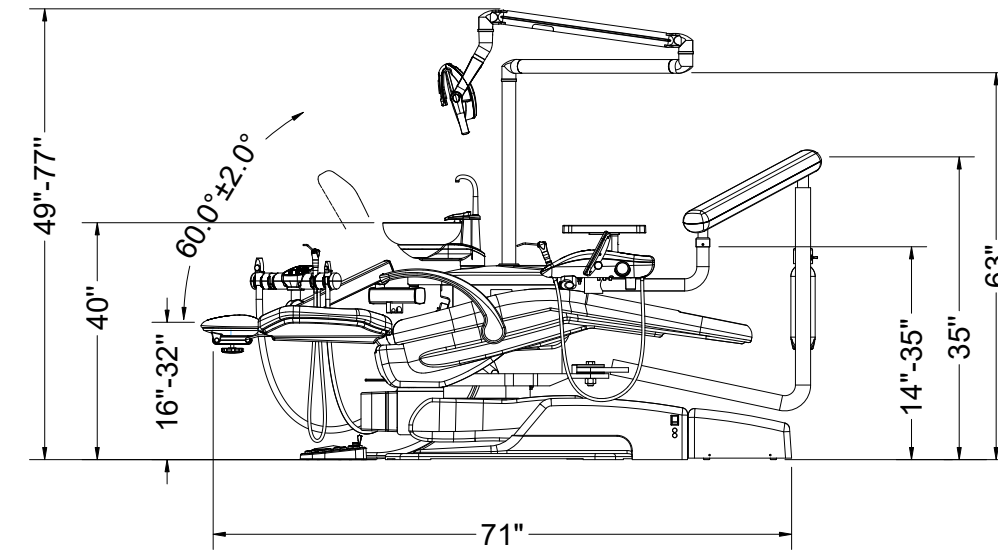
Patient Chair

- Trendelenburg movement ●
- Programmable positions ●
- Safety switch ●
- Double articulating headrest ●
- Left and right armrest ●
- 2 Foot controllers ●
- 30° chair movement ●
- Seamless upholstery ●
- Upgraded upholstery ○
- (Patient Chair and two Stools)

Allow 90 days for delivery of optional equipment.

Optimum use of space

The Vanguard without Cuspidor is well suited for smaller operatories where limited space is available.



COMPLETE DENTAL UNIT



The New Vanguard Smart Unit

The versatile new Ritter Dental Vanguard Smart is a German-engineered dental unit that unites electronic technology with a sleek, contemporary design. This unit comes with the excellent quality and features you have come to expect from Ritter Dental.

Standard Features

- Advanced traditional or continental delivery system
- Self-contained clean water system
- Assistant's instrument package
- LED operating light
- Patient chair with seamless upholstery
- Cuspidor with movable spittoon

Vanguard Smart **Dental Unit**



Features and options Vanguard Smart

● STANDARD ○ OPTION

Patient Chair

- Trendelenburg movement ●
- Programmable positions ●
- Safety switch ●
- Double articulating headrest ●
- Left and right armrest ●
- 2 Foot controllers ●
- Seamless upholstery ●
- Upgraded upholstery ○
- (Patient Chair and two Stools)

Dentist's Delivery System

- Traditional (hanging) or Continental (swinging) ●
- Three-way syringe ●
- 3 outlets for turbine or air motor without light ●
- Fiber optic outlets 5 or 6 Pin ○
- MCX Micro Motor Kit with Optima Display ○
- iOptima INT Micro Motor Kit Standard ○
- iOptima INT Micro Motor Kit ALL-IN-ONE ○
- Acteon Newton Scaler ○
- Holder for 2 standard trays ●
- Traytable on top ●
- Lower double tray ○

Assistant's Package

- Integrated button panel ●
- Moveable assistant's delivery arm ●
- Three-way syringe ●
- Large suction hose ●
- Small suction hose ●
- Curing light LED ○

Cuspidor

- Moveable ceramic cuspidor ●
- ABS Aqua Bottle System ●
- Venturi Internal System water/air or air/air ○
- Connection for external suction ●
- Vacuum Drain Kit ○

Operating Light

- Ritter Standard LED ●
- Maia Light LED ○
- Ritter SunLite LED ○
- Eva Sunlite LED ○
- Eva Sunlite LED with Camera ○
- Eva Light Arm ○
- Eva Ceiling Mount ○

Stools

- Vanguard Doctor Stool ○
- Vanguard Assistant Stool ○

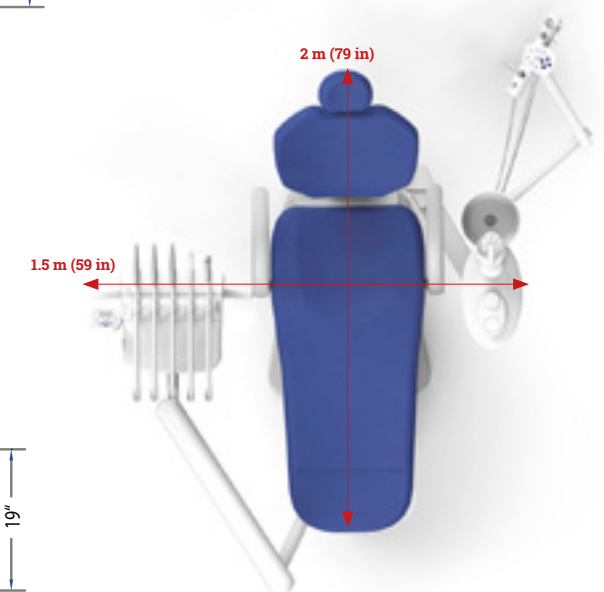
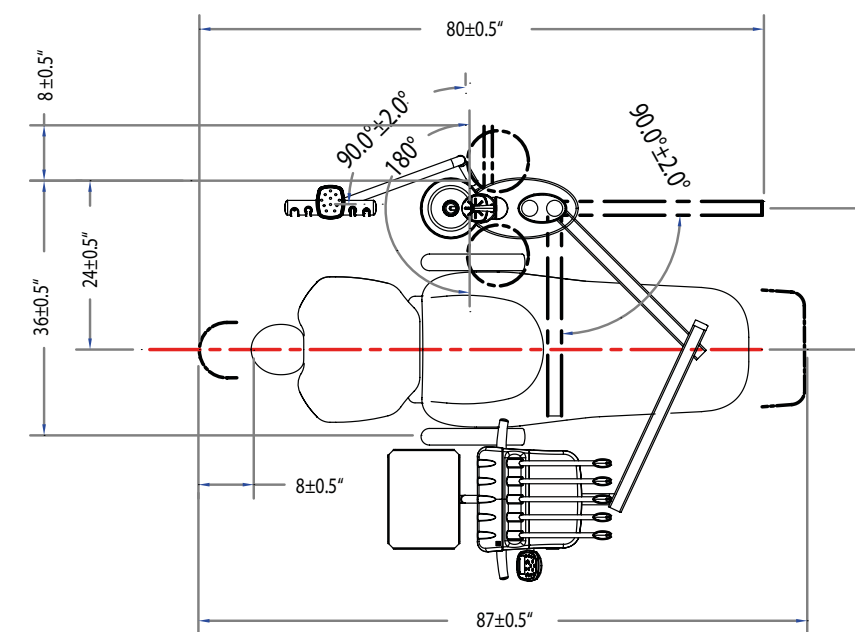
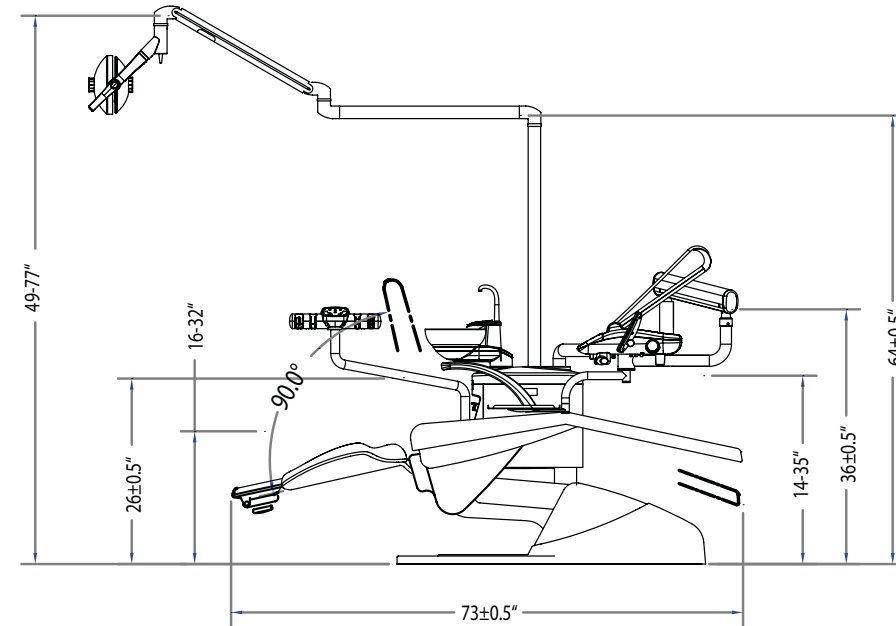
Multi-Media

- Intraoral camera with monitor ○

Allow 90 days for delivery of optional equipment.

Optimum use of space

The Vanguard Smart is well suited for smaller operatories where limited space is available.



Lower tray (optional)

Tray on top (standard)

Vanguard

Electric or Hydraulic
without Cuspidor

W I T H O U T C U S P I D O R

The New Vanguard Unit

The exciting new Ritter Dental Vanguard dental unit is german-engineered to integrate electronic technology with smooth electric or hydraulic movement. It is Ritter's latest and most advanced unit. The Vanguard is left/right adaptable, with all of the quality and features you have come to expect from Ritter Dental.

Standard Features

- Advanced traditional or continental delivery system
- Self-contained clean water system
- Assistant's instrument package
- Adjustable intensity LED operating light
- left/right conversion
- Patient chair with seamless upholstery



Vanguard **Dental Unit** without Cuspidor

Features and options Vanguard

● STANDARD ○ OPTION

Patient Chair

- Trendelenburg movement ●
- Programmable positions ●
- Safety switch ●
- Double articulating headrest ●
- Left and right armrest ●
- 2 Foot controllers ●
- 30° chair movement ●
- Seamless upholstery ●
- Upgraded upholstery ○
- (Patient Chair and two Stools)

Dentist's Delivery System

- Traditional (hanging) or Continental (swinging) ●
- Three-way syringe ●
- 3 outlets for turbine or air motor without light ●
- Fiber optic outlets 5 or 6 Pin ○
- MCX Micro Motor Kit with Optima Display ○
- iOptima INT Micro Motor Kit Standard ○
- iOptima INT Micro Motor Kit ALL-IN-ONE ○
- Acteon Newton Scaler ○
- Scaler S type LED ○
- Holder for 2 standard trays ●
- Traytable on top ●
- Lower double tray ○

Assistant's Package

- Integrated Button panel ●
- Moveable assistant's delivery arm ●
- Three-way syringe ●
- Large suction hose ●
- Small suction hose ●
- Curing light LED ○

Operating Light

- Ritter Standard LED ●
- Maia Light LED ○
- Ritter SunLite LED ○
- Eva Sunlite LED ○
- Eva Sunlite LED with Camera ○
- Eva Light Arm ○
- Eva Ceiling Mount ○

Stools

- Vanguard Doctor Stool ○
- Vanguard Assistant Stool ○

Multi-media

- Intraoral camera with monitor ○

Allow 90 days for delivery of optional equipment.

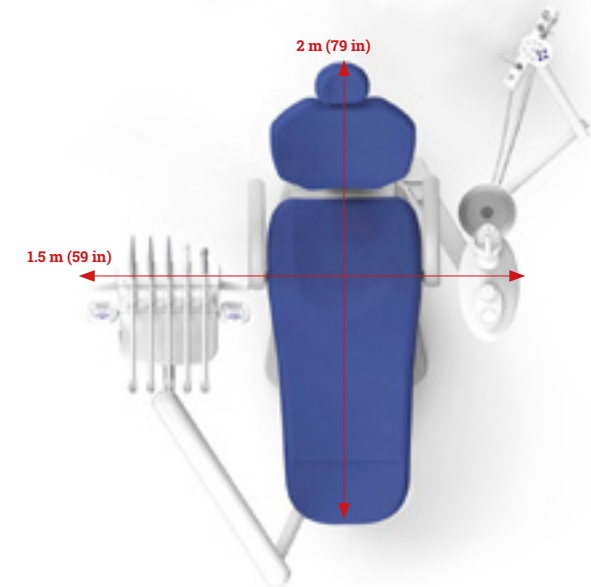
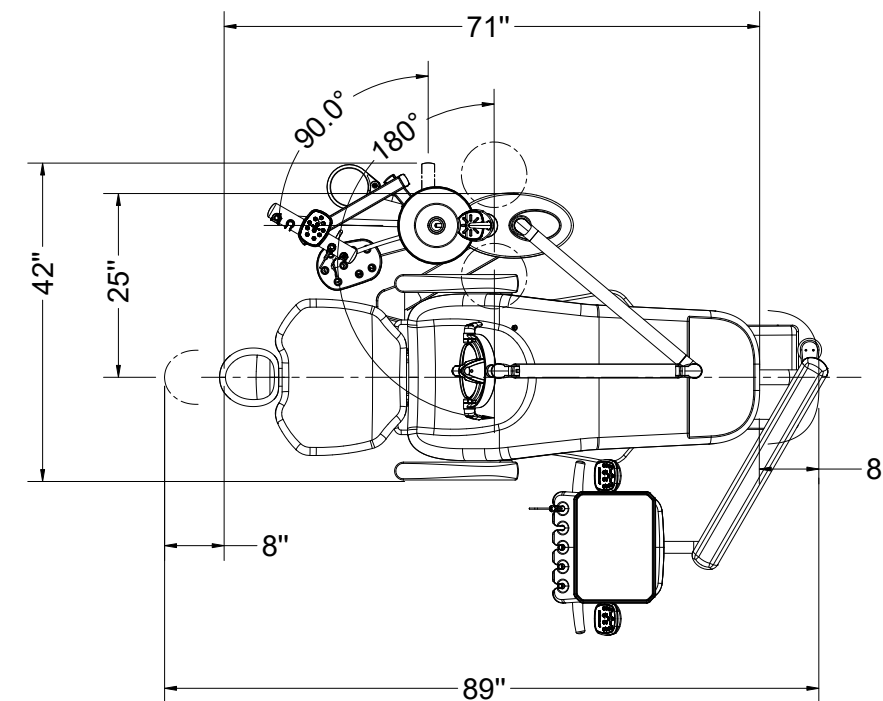
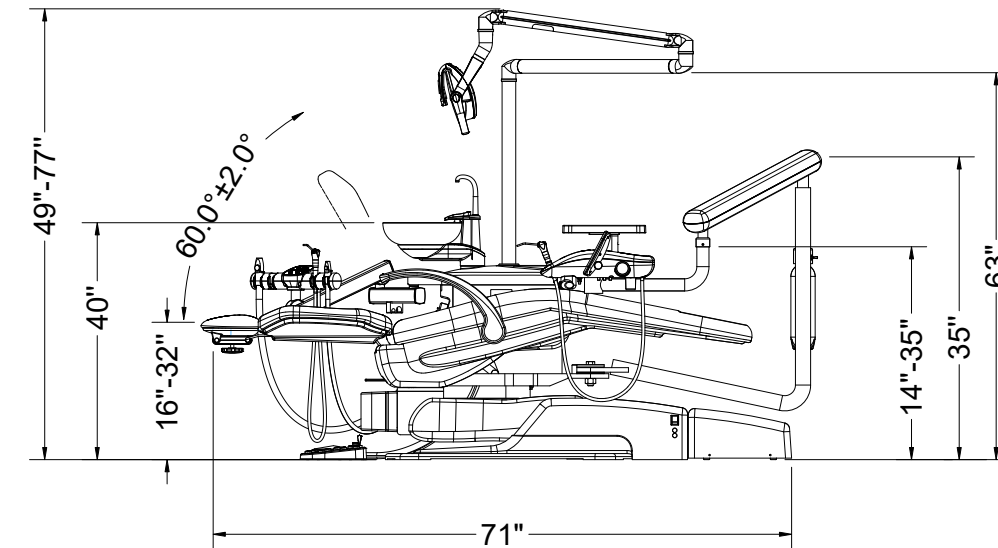


Lower tray (optional)

Tray on top (standard)

Optimum use of space

The Vanguard without Cuspidor is well suited for smaller operatories where limited space is available.



Vanguard

Electric or Hydraulic

COMPLETE DENTAL UNIT

The New Vanguard Unit

The exciting new Ritter Dental Vanguard dental unit is german-engineered to integrate electronic technology with smooth electric or hydraulic movement. It is Ritter's latest and most advanced unit. The Vanguard is left/right adaptable, with all of the quality and features you have come to expect from Ritter Dental.

Standard Features

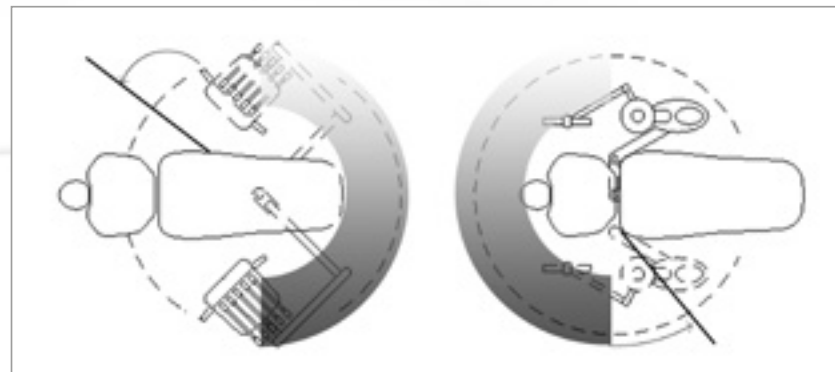
- Advanced traditional or continental delivery system
- Self-contained clean water system
- Assistant's instrument package
- Adjustable intensity LED operating light
- left/right conversion
- Patient chair with seamless upholstery
- Cuspidor with movable spittoon

Vanguard **Dental Unit** with Cuspidor



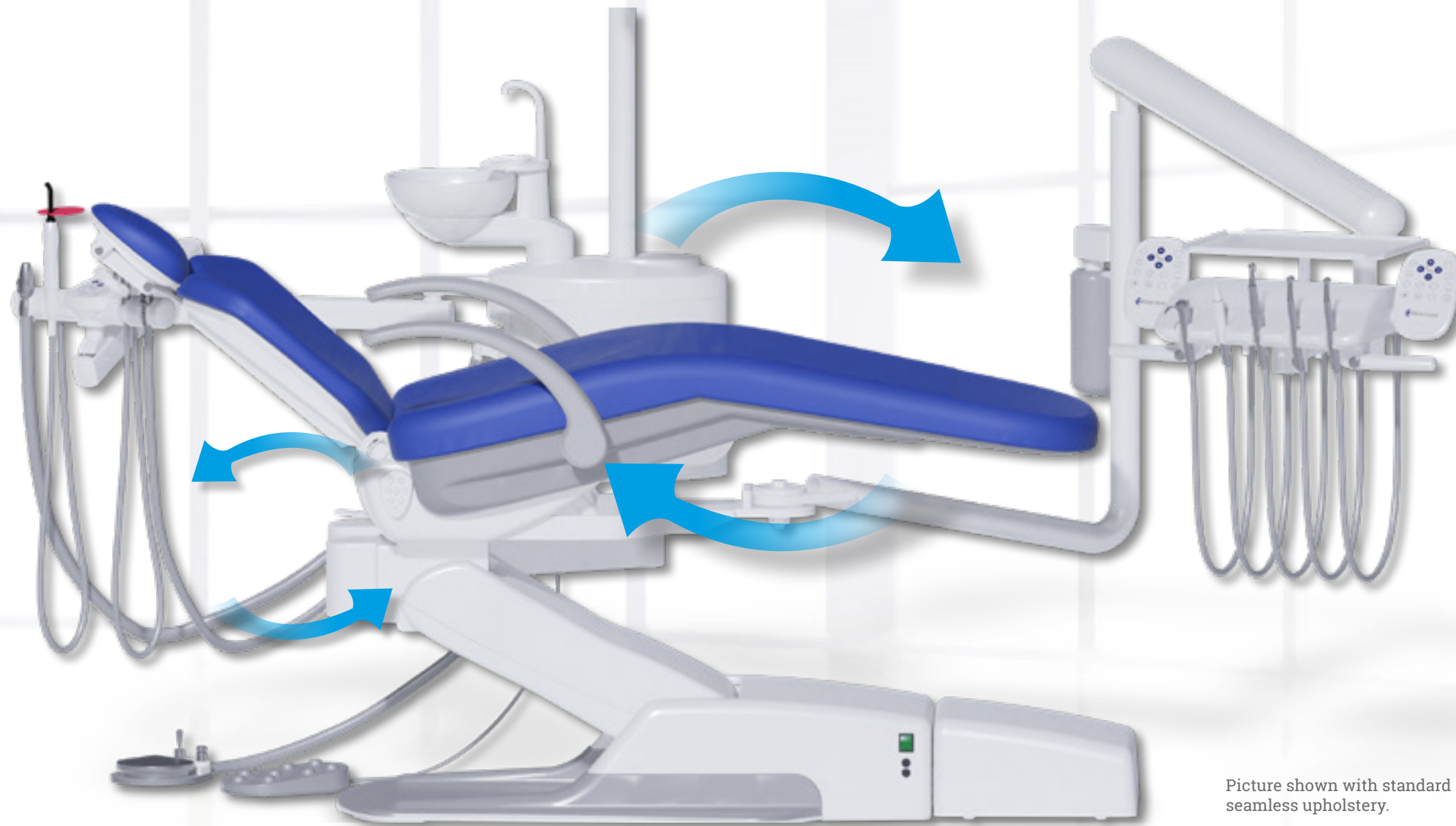
Vanguard

Electric or Hydraulic
CHAIR FEATURES



Changeable on the fly:

Swivel points and centers of rotation



Chair Features

- Electric or Hydraulic chair movement for fast and quiet positioning
- Ergonomic design for comfortable seating during long treatments
- Broad space for dentist's legs
- High-quality seamless upholstery
- Chair swivel 30° left/right
- Programmable chair positions, plus last "position recall"
- Auto return function:
Safety switches
If the safety switch is activated, the chair automatically goes up a few inches
- Trendelenburg movement:
Seat and backrest movement synchronized
- Left and right armrest
- Double-articulated headrest

Picture shown with standard seamless upholstery.



Easy handling and efficient treatments: According to the personal preference, two different versions are available, which allow an easy adjustment of the instruments.

- Tray table available
- Pneumatic arm brake mechanism
- Up to 5 instruments
- 2 control panels
- Pneumatic switches in instrument holders
- Optional brushless motors with LED
- Optional fiber optic outlets
- Optional Scaler S type LED

Traditional Delivery System

(hanging version)



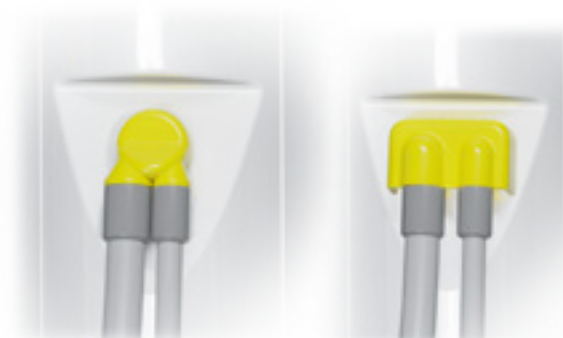
2 Control panels

- 4 programmable patient chair positions, plus last position and exit position
- Removable silicon pad for easy cleaning and disinfection (S-Version)



Continental Delivery System

(swinging version)



External Wet Suction

Venturi Suction System



Double-articulated assistant arm, height adjustable

Assistant's Package

- Integrated button panel
- Up to 4 instruments
- Small and large suction hose
- Air/water syringe
- Double-articulated and adjustable arm movement



Features and options Vanguard

● STANDARD ○ OPTION

Patient Chair

- Trendelenburg movement ●
- Programmable positions ●
- Safety switch ●
- Double articulating headrest ●
- Left and right armrest ●
- 2 Foot controllers ●
- 30° chair movement ●
- Seamless upholstery ●
- Upgraded upholstery ○
- (Patient Chair and two Stools)

Dentist's Delivery System

- Traditional (hanging) or Continental (swinging) ●
- Three-way syringe ●
- 3 outlets for turbine or air motor without light ●
- Fiber optic outlets 5 or 6 Pin ○
- MCX Micro Motor Kit with Optima Display ○
- iOptima INT Micro Motor Kit Standard ○
- iOptima INT Micro Motor Kit ALL-IN-ONE ○
- Acteon Newton Scaler ○
- Scaler S type LED ○

Holder for 2 standard trays

- Traytable on top ●
- Lower double tray ○

Assistant's Package

- Integrated Button panel ●
- Moveable assistant's delivery arm ●
- Three-way syringe ●
- Large suction hose ●
- Small suction hose ●
- Curing light LED ○

Cuspidor

- Moveable ceramic cuspidor ●
- ABS Aqua Bottle System ●
- Venturi Internal System water/air or air/air ○
- Connection for external suction ●
- Vacuum Drain Kit ○

Operating Light

- Ritter Standard LED ●
- Maia Light LED ○
- Ritter SunLite LED ○
- Eva Sunlite LED ○
- Eva Sunlite LED with Camera ○
- Eva Light Arm ○
- Eva Ceiling Mount ○

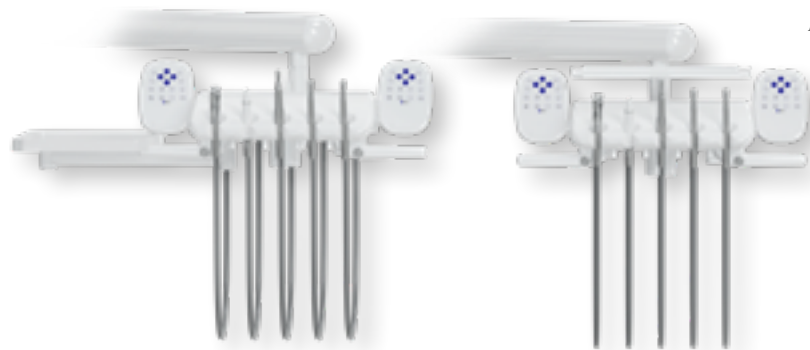
Stools

- Vanguard Doctor Stool ○
- Vanguard Assistant Stool ○

Multi-media

- Intraoral camera with monitor ○

Allow 90 days for delivery of optional equipment.

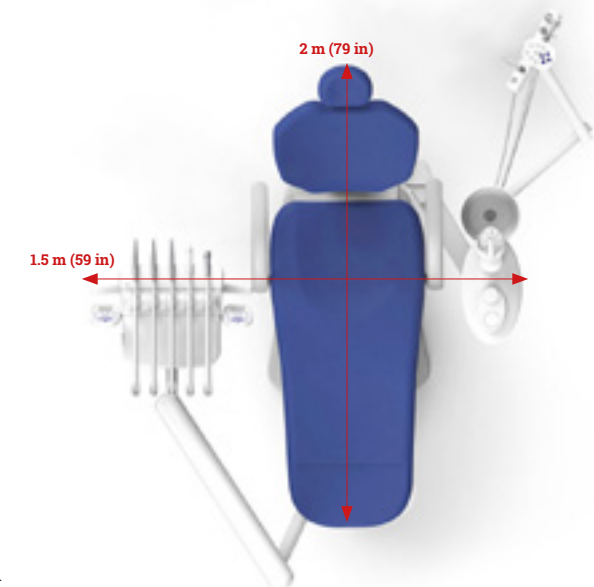
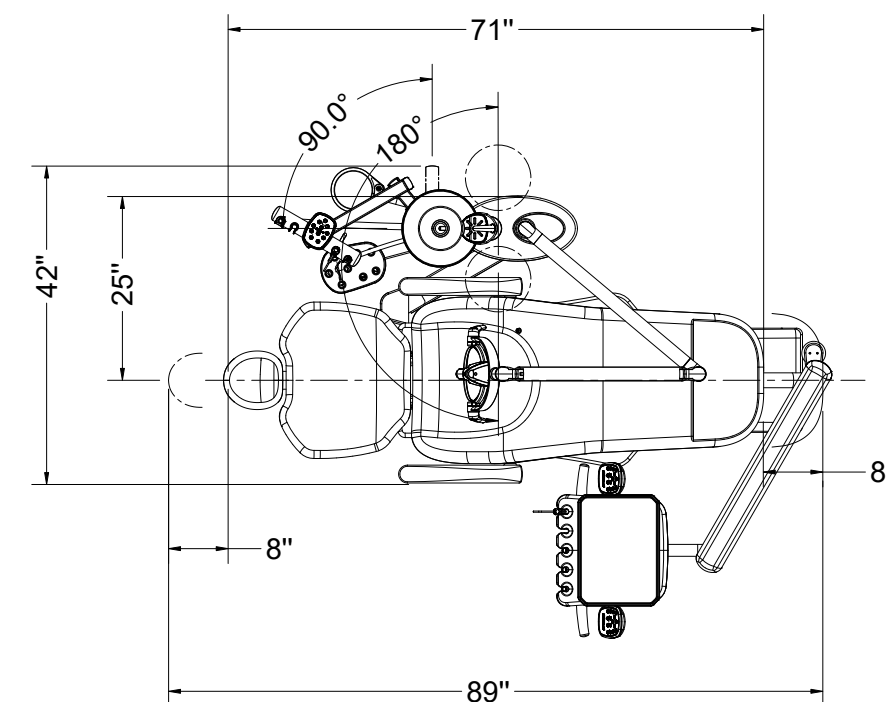
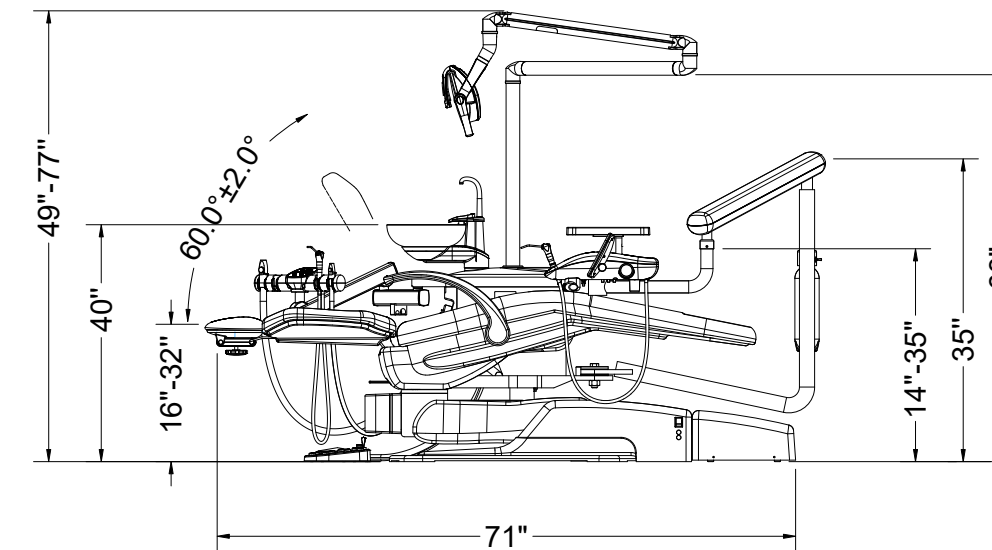


Lower tray (optional)

Tray on top (standard)

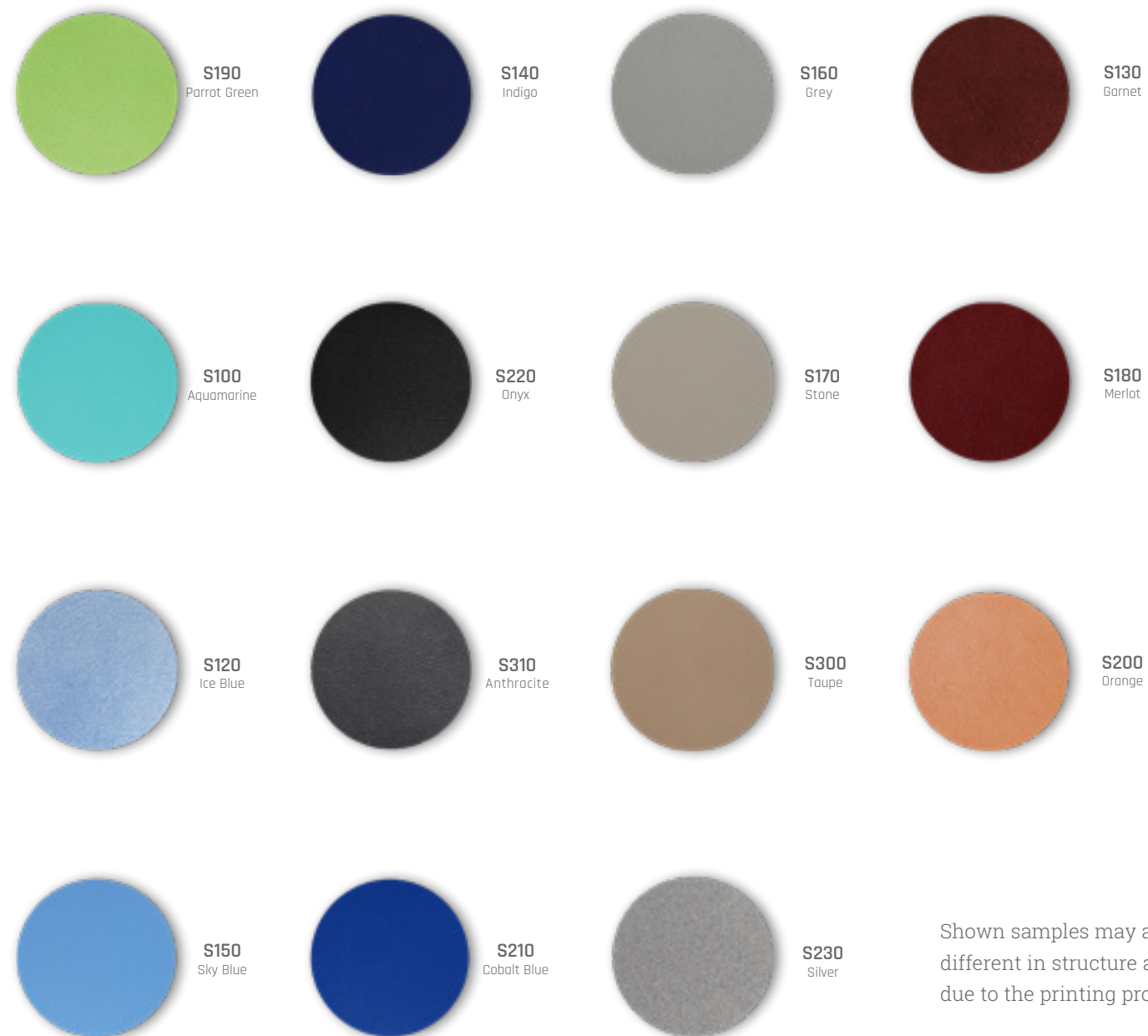
Optimum use of space

The Vanguard is well suited for smaller operatories where limited space is available.



Upholstery Colors

15 upholstery colors give your practice an individual touch.



Shown samples may appear different in structure and color due to the printing process.

Stools

A long workday is comfortably mastered with good equipment. Ergonomic seating and precise illumination of your patient are the essential prerequisites for this.

- Backrest with fixed position or dynamic movement
- Ergonomic and comfortable seating
- Symmetrical backrest
- Gas lift cylinder
- Chrome legs
- Five dual casters for stability
- Color-matching upholstery available in multiple colors
- Available with or without foot ring



Doctor Stool



Assistant Stool

Operating Lights

Best illumination where it is needed.

Ritter Standard LED

- Light intensity: 8.000 to 30.000 Lux
- Colour temperature: 5.000 Kelvin
- Sensor switch – light on/off by hand movement
- Low heat emission
- Precise illumination of the working field



Maia Light LED

- Light intensity: 3.000 to 45.000 Lux
 - Colour temperature: 6.000 Kelvin
 - Cooling system: static heat sink (no fan required)
 - Automatic saving of the light intensity used, after shutting off the dental unit and after the rinse function.
 - The electronic lighting control can be activated by joystick, sensor or dental unit.
- It adjusts the light from maximum to minimum continuous intensity, while maintaining constant colour temperature.
- Working light field: 8 x 3.9" (at 28" distance)
 - Handles are removable and autoclavable



Ritter SunLite LED

- Light intensity: 8.000 to 50.000 Lux
- Colour temperature: 4.200 to 6.000 Kelvin
- High CRI value for particularly powerful colour rendering
- Special colour temperature control system: Improves colour contrast on soft fabrics and increases visual clarity and detail recognition
- Low heat emission
- The 10 LED sources ensure uniform and shadow-free illumination. The absence of shadows is achieved through the overlapping of a hundred individual light fields
- working light field: 2.7 x 5.5" (at 28" distance)
- Handles are removable and sterilisable
- Lamp can be rotated freely through 180°



EVA Sunlight LED

EVA Sunlight provides a new generation of Sunlike LED, to benefit from the illumination, colour rendering and well-being as similar as the natural sunlight.

It drives the operator through tiny details for an increasingly reliable, efficient and comfortable view. The bright bulb on the head shows the level of illumination in use.

- Light intensity: 50.000 Lux
- Colour temperature: 5.000 Kelvin
- Working light field: 7.5 x 3.9" (at 28" distance)
- Handles are removable and autoclavable
- Rotation System: 3rd axis



EVA Sunlight LED with Camera

EVA CAM is the operating lamp with integrated professional camera. The zoom is specific for dental practice to ensure direct and precise framing. The foot control allows no interruptive procedure to keep the attention on the operating field. EVA CAM is the best partner for constant and effective communication with the patient, colleagues and students and it enables a comprehensive and accurate record for diagnosis, treatment and traceability.

- Resolution 4K
- Video format MP4
- Photo format JPG
- Standard lens: 25mm
- Optional lens: 16mm

Options for EVA Sunlight: EVA Ceiling Mount



EVA Light Arm





Foot control for chair movements



Foot control for instruments

Foot Controllers

Designed for ease in chair movement

- Large foot control pad for easy repositioning
- Manual control of chair movements
- Up/down of backrest and chair

Foot control for chair movements

- Rinsing position/last treatment position
- Entry/exit position
- Three programmable chair positions

Foot control for instrument functions

- Speed/power control for the active instrument
- Water on/off mode instruments

Buttons

- Switch for instrument water
- button for chip air function

Feature Comparison of Dental Units



	Vanguard	Vanguard without Cuspidor	Vanguard Chair Only	Vanguard Smart	Vanguard Smart Chair Only
Patient chair					
Chair Movement	Electric or Hydraulic Chair-mounted	Electric or Hydraulic Chair-mounted	Electric or Hydraulic Chair-mounted	Electric Chair-mounted	Electric Chair-mounted
Unit Mounting	●	●	●	●	●
Patient chair synchronized (Trendelenburg)	●	●	●	-	-
Left/Right hander version, 30° movement	●	●	●	● (not movable)	● (not movable)
Left armrest	● (movable)	● (movable)	● (movable)	● (movable)	● (movable)
Right armrest	● (movable)	● (movable)	● (movable)	● (movable)	● (movable)
Double Articulated headrest	●	●	●	●	●
Foot control for chair movements	●	●	●	●	●
Foot control for instruments	●	●	●	●	●
Programmable positions	●	●	●	●	●
Safety switch	●	●	●	●	●
Seamless upholstery	●	●	●	●	●
Upgraded upholstery (Chair and two Stools)	○	○	○	○	○
Dentist's Delivery System					
Three-way syringe	●	●	-	●	-
3 outlets for turbine or air motor without light	●	●	-	●	-
Fiber optic outlets	○	○	-	○	-
MCX Micro Motor Kit with Optima Display	○	○	-	○	-
iOptima INT Micro Motor Standard	○	○	-	○	-
iOptima INT Micro Motor Kit ALL-IN-ONE	○	○	-	○	-
Acteon Newton Scaler	○	○	-	○	-
Double tray support for 2 trays	●	●	-	●	-
Traytable on top	●	●	-	●	-
Lower double tray	○	○	-	○	-
1. Tray stainless steel	○	○	-	○	-
2. Trays stainless steel	○	○	-	○	-
Silicone mat for 2 trays	●	●	-	●	-
Assistant's Package					
Three-way syringe	●	●	-	●	-
Large suction hose	●	●	-	●	-
Small suction hose	●	●	-	●	-
Curing light LED	○	○	-	○	-
Integrated button panel	●	●	-	●	-
Moveable assistant's delivery arm	●	●	-	●	-
Cuspidor					
Cup heating	○	-	-	○	-
Detachable and thermadisinfected cuspidor	● (Ceramic)	-	-	● (Ceramic)	-
Tray table with 2 trays	●	-	-	●	-
Aqua Bottle System (ABS)	●	-	-	●	-
Venturi Internal System water/air or air/air	○	-	-	○	-
Connection for external suction	●	-	-	●	-
Operating light					
Ritter Standard LED	●	●	-	●	-
Maia Light LED	○	○	-	○	-
Sunlite LED	○	○	-	○	-
Eva Sunlight LED	○	○	-	○	-
Eva Sunlight LED with Camera	○	○	-	○	-
Eva Light Arm	○	○	-	○	-
Eva Ceiling Mount	○	○	-	○	-
Stools					
Vanguard Doctor Stool	○	○	-	○	-
anguard Assistant Stool	○	○	-	○	-
Multimedia					
Intraoral camera with Monitor	○	○	-	○	-

Intraoral Camera

RITTER CAM

**A3W-X Intraoral Camera
Mount and Monitor incl.**



Digital intra-oral camera and monitor

With the Ritter intraoral camera, you can easily highlight pathological processes in the image and explain clinical measures in a simple way. This facilitates the dialog with the patient and prevents patient objections and concerns. Acceptance of the treatment is increased because patients are more involved in the process and thus quickly understand the importance of the planned treatment.

For you as a practitioner, this means more efficiency and productivity

Technical specifications:

Power supply:	220 V or 24 V
Input Power:	4.5 VA~5.5 VA
Camera Lens Auto Focus:	15 mm~30 mm
Operating Range:	18 mm~25 mm
Handle Wire Length:	2 m
Image Format:	JPEG
View Angles:	62 degrees
Imaging Sensor:	CMOS sensor, 2.0 Mega Pixels
Resolution:	1280*1024 (30 fps)
Display Screen:	17"
Backlight:	10 LEDs; Support lights off

MCX Micro Motor Kit

With Optima Display



MCX LED – The smallest of the big

The MCX with adjustable LED light is the smallest and lightest brushless micromotor ever designed by Bien-Air. With MCX, you'll benefit from an even better grip and balance, ensuring more precise movements and less fatigue during the day.

It can be sterilized and thanks to its Smart Logic electro-technical management, its power is automatically regulated, thus adapting instantly to variations in stress. The MCX delivers its power in a precise and constant way, without the slightest jolt.

OptimaINT and its MCX micromotor guarantee perfect control of the tool, managing the speed and the reversal of the direction of rotation. Providing the ultimate speed and torque control, the OptimaINT with Smart Logic technology is capable of exploiting to the fullest.

Thanks to its Easy-Nav philosophy, the OptimaINT is incredibly intuitive and adapts perfectly to Ritter Dental Vanguard Line.

Technical specifications:

Applications:	Restoration, Prophylaxis
Speed range:	100–40 000 rpm
Max. torque:	2,5 Ncm
Torque control:	No
Dimensions Ø:	21 x 42 mm
Weight:	78 g
Endo functions:	No
Light:	LED
Autoclavable:	Yes
Hose attachment/rotation:	Screws / ± 200°

MX2 Micro Motor Kit

With iOptima STANDARD

MX-i Micro Motor Kit

With iOptima ALL-IN-ONE



Endodontics. Restauration. Prophylaxis.

iOptimaINT and its MX2 micromotor is the all-in-one solution that offers the full range of treatment options and is seamlessly integrated into the Ritter Dental Vanguard Line. You no longer need any additional equipment: iOptimaINT can be used to perform restorative procedures and endo treatments.

The system can be easily controlled via an Apple® iPad mini tablet *2. The iOptimaINT therefore requires little space and guarantees a perfectly functional working environment. Highly versatile, the iOptimaINT enables you to perform most of your dental procedures.

The Bien-Air MX2 carbonless micromotor with adjustable LED light is a little overachiever. The result is exemplary balance and comfort: constant power, perfect control of speed, torque and reversal.

Technical specifications:

Applications: Restoration, Prophylaxis, Endodontics
 Speed range: 100–40 000 rpm
 Max. torque: 3,5 Ncm
 Torque control: Yes
 Dimensions Ø: 21 x 44 mm
 Weight: 79 g
 Endo functions: Yes
 Light: LED with adjustable light intensity
 Autoclavable: Yes
 Hose attachment/rotation: Screws / ± 200°

*iPad mini not included

Implantology. Surgery.

iOptimaINT is the All-in-One solution offering you the full range of treatment options seamlessly integrated into your dental chair. No need for additional equipment anymore: iOptimaINT lets you perform your restorative procedures, endo treatments (incl. reciprocating mode) and surgical procedures incl. implant placement. A Piezo scaling function is included as well.

Installed directly into the existing dental unit, the system is easily controlled through an Apple® tablet. The iOptimaINT therefore requires minimal space and guarantees a perfectly functional working environment.

MX-i LED micromotors are first and foremost a model of stability. At both high and low speeds, they offer enhanced working comfort and their high torque copes with the most complex implant insertion procedures. Depending on the desired speed, the power is constantly adapted in order to provide the optimum result.

Technical specifications:

Applications: Implantology, Surgery
 Speed range: 100–40 000 rpm
 Max. torque: 6 Ncm
 Torque control: Yes
 Dimensions Ø: 23 x 69 mm
 Weight: 115 g
 Light: LED with adjustable light intensity
 Autoclavable: Yes
 Hose rotation: 0°

*iPad mini not included

Notes



ProImplant 3rd Gen Implant System.

Simplicity – the keyword of the new range of products developed by Bien-Air Dental in the field of implantology and oral surgery motors. Are you a dentist and/or specialized in implantology and looking for a simple, fast and efficient solution for your daily procedures? The Chiropro is the ideal solution for precise, reliable implant placement.

Technical specifications:

- Intuitive navigation: a single rotary knob for control
 - Removable and sterilizable knob
- 5 programs freely programmable
- Torque control
- MX-i LED micromotor with ceramic ball bearing
- Maximum torque: 70 Ncm
- Set includes:
 - 1 x console Chiropro 3rd Gen 1x contra-angle CA 20:1 L Micro-Series
 - 1 x MX-i LED 3rd Gen micromotor with 3 years warranty
 - 1 x cable MX-i LED 3rd Gen
 - 1 x foot pedal
 - 1 x handpiece holder
 - 5 x irrigation cables
 - 2 x sterile protective foils

Ritter ProCure

CURING LIGHT

Ritter LED Curing Light



Ritter ProCure

- Wireless
- Three working modes: Full, Ramping, Pulse
- Curing light up to 50 seconds
- Constant light intensity.
The solidification effect is stable.

Technical specifications:

Rated Voltage:	24 V~
Rated Input:	≤8 W
Power:	from 1000 mW/cm ² to 1200 mW/cm ²
Light source:	blue light 385–515 nm
Working conditions:	
Environment temp.:	5 °C to 40 °C
Relative humidity:	30 %–75 %
Dimension:	26x25x260 mm
Weight:	135 g

Kolibri-S

ULTRASONIC PIEZO SCALER



Kolobri Fiber Optic Scaler



Built in Ultrasonic Scaler for calculus elimination and root canal treatment

- Detachable handpiece
- Automatic frequency tracking
- Including 6 tips, 4 Endo tips, Torque and Endo wrench, installation set, LED lamp

Technical specifications:

Rated voltage:	24 V~
Rated current:	1.3 A
Output primary tip	
Vibration excursion:	≤100 micrometer
Output tip	
Vibration frequency:	28 kHz ±3 kHz
Output	
half-excursion force:	<2 N
Output power:	3 to 20 W
Water pressure:	0.01 to 0.5 MPa
Weight of main unit:	0.2 kg





Ritter Compressor RA 7/3 D (Dryer)

Features:

- Oil free
- Adjustable pressure
- Auto stop and restart
- Air tank internal surface epoxy treatment
- Low maintenance
- Thermally protected
- Low running costs

Advantages:

- Lower noise level
- Compact layout and smart design
- Competitive price
- Secure handling
- Constructed for continuous duty
- Options available: Tank volume, Silent cabinet

Technical specifications:

Power:	3 HP via 3 pumps
Rotational speed:	1400 rpm
Tank:	80 Liter (18 Gallons)
Conveying capacity:	456 Liter (100 Gallons) Minute
Sound pressure:	56 dB (A)
Users:	5 to 6
Operating voltage:	220 V
Dimensions:	920 x 425 x 725 mm (36,2" x 16,7" x 28,5")
Weight:	78/90 kg (172/198 lb)



Ritter Compressor RA 7/4 D (Dryer)

Features:

- Oil free
- Adjustable pressure
- Auto stop and restart
- Air tank internal surface epoxy treatment
- Low maintenance
- Thermally protected
- Low running costs

Advantages:

- Lower noise level
- Compact layout and smart design
- Competitive price
- Secure handling
- Constructed for continuous duty
- Options available: Tank volume, Silent cabinet

Technical specifications:

Power:	4 HP via 4 pumps
Rotational speed:	1400 rpm
Tank:	135 Liter (30 Gallons)
Conveying capacity:	608 Liter (134 Gallons) Minute
Sound pressure:	56 dB (A)
Users:	7 to 8
Operating voltage:	220 V
Dimensions:	1070 x 460 x 750 mm (42,1" x 18,1" x 29,5")
Weight:	91/114,5 kg (201/252 lb)



MGF 100/50 TANDEM PRIME M

Features:

Prime oil-free compressors equipped with adsorption air dryers provide pure air with 0,01 micron filtration and -40°C dew point at atmospheric pressure, in conformity with the International Standards in matter of compressed air quality. These versions are suitable for food and medical industry, in general can be used in all the applications where an excellent purity of compressed air is required.

Technical specifications:

Power:	6 HP
Tank:	90 Liter (24 Gallons)
Air capacity:	450 Liter (119 Gallons) Minute
Pressure max:	10 bar
Sound pressure:	69 dB (A)
Users:	6 Maximum simultaneous
Dimensions:	1230 x 630 x 820 mm (49" x 28,5" x 40,2")
Weight:	118 kg (260 lb)
Available as:	220 V/60 Hz / single Phase 230-400 V/60 Hz / 3 Phase



MGF 200/75 PRIME M

Features:

Prime oil-free compressors equipped with adsorption air dryers provide pure air with 0,01 micron filtration and -40°C dew point at atmospheric pressure, in conformity with the International Standards in matter of compressed air quality. These versions are suitable for food and medical industry, in general can be used in all the applications where an excellent purity of compressed air is required.

Technical specifications:

Power:	9 HP
Tank:	200 Liter (53 Gallons)
Air capacity:	660 Liter (174 Gallons) Minute
Pressure max:	7 bar
Sound pressure:	72 dB (A)
Users:	9 Maximum simultaneous
Dimensions:	1450 x 820 x 900 mm (57" x 32,3" x 35,4")
Weight:	183 kg (403 lb)



Metasys Excom Hybrid 5 Suction Unit 1,5/1,75 Kw

Features:

- Centrifugal separation rotor
- Frequency-controlled suction power regulation
- Aluminium turbine wheel
- High wastewater outlet
- One motor shaft
- Airflow-optimized cooling fins
- Low running costs

Advantages:

The suction power of dry suction motors, combined with integrated air/water separation and different, optional amalgam separator modules are the cornerstones of a central suction system, marked by its flexible and individual structure, high level of user-friendliness, and its unobtrusive yet efficient technology. The EXCOM hybrid can be used as a dry as well as a semi-wet suction system makes it so unique.

Technical specifications:

Power supply:	230 V AC
Frequency:	50/60 Hz
Max. current consumption:	9,0/10,0 A
Max. electrical shaft power:	1,5/1,75 kW
Max. ambient temperature:	40 °C
Airflow rate:	2000/2400 l/min
Negative pressure regulated:	180 mbar
Noise level:	64/68 dB(A)
Noise level with cover:	51/54 dB(A)
Dimensions (H x W x D):	620 x 460 x 455 mm
Dimensions with cover (H x W x D):	785 x 500 x 550 mm
Weight:	30 kg (66 lb)
Weight with cover:	67 kg (148 lb)



W&H Lexa MN-111

Features:

- User-friendly interface
- Customizable drying time
- Large capacity sterilizer
- Versatile sterilization program options
- Superior vacuumassisted drying
- Meets stringent hygiene standards
- Easy maintenance
- Programmable cycle start
- Excellent value for money
- Automatic digital cycle recording on USB stick
- Automatic water filling (optional)
- User authentication and load release (optional)
- Barcode label printing (optional)

Technical specifications:

Chamber size:	28 liters (7.4 gal)
Main/Used water tanks:	6.4/6.7 liters (1.7/1.8 gal)
Connection types:	2 USB ports 1 Ethernet port (optional)
Power supply:	100–125 V AC; 50/60 Hz 12 A Single Phase
Dimension (W x H x D):	490 x 452 x 616 mm 19.3" x 17.8" x 24.3"
Weight (empty):	48 kg (105.8 lbs)

Sterilizer supplied with chamber rack, 4 large trays, tray holder, drain tube, USB drive

Imaging

DENTRI MAX



DENTRI MAX



3D Imaging

MAX 18x16.5 cm FOV, perfect for capturing most maxillofacial structures

PANO with Autofocus

2D panoramic feature with Autofocus for minimized distortion

Bitewings

Extraoral bitewing images for better patient comfort

Cephalometric X-ray(optional)

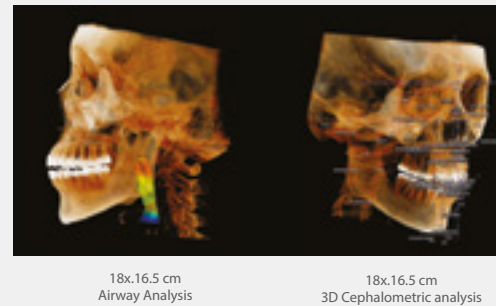
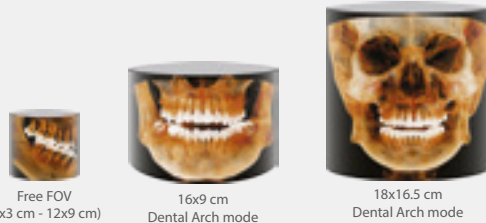
Optional cephalometric arm attachment, excellent diagnostic images for orthodontic practice

Model Scan Option

Model CBCT Scan for STL extraction

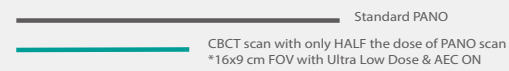
Field of View

Expansive FOV 18x16.5 cm maximizes your practice. Dentri Max provides you with various FOV size options from 3x3 cm to 18x16.5 cm

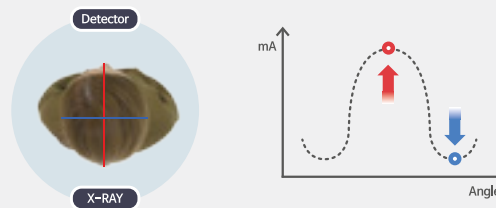


Low Dose Radiation

An additionally equipped filter & Adaptive Exposure Control(AEC) technology significantly reduces radiation exposure. HDX WILL's imaging reconstruction still allows superior image quality.



Adaptive Exposure Control(AEC)



Superior Image Quality

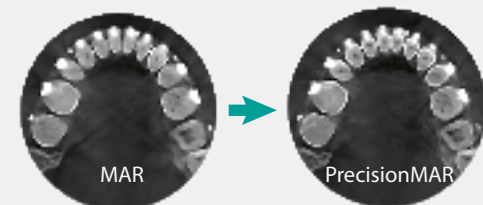
HDX WILL's state of the art imaging reconstruction algorithm finds the best value of each voxel and enhances image contrast and sharpness.



PrecisionMAR

PrecisionMAR™ offers unprecedented clarity around metal, improving diagnostics and planning.

- Minimal scatter
- Reduced shading artifact
- Clearly define bone and teeth structures around metal



CBCT Panoramic Imaging FOV 16.5 x 18

Dedicated 2D Panoramic X-ray



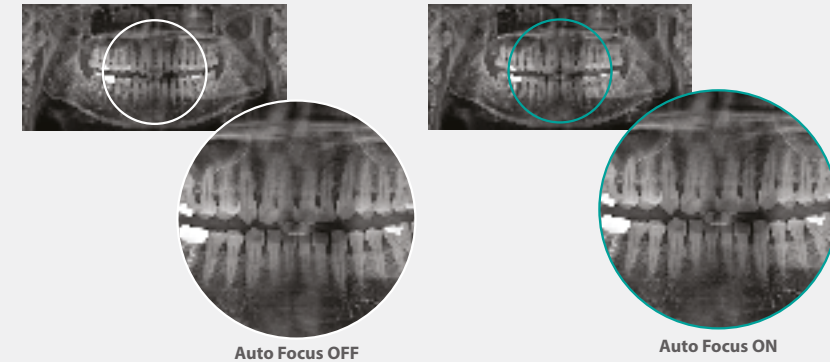
Auto Focus
Minimized distortion, Maximized ability to obtain clear images

Bitewings
Extraoral Bitewing options

TMJ
TMJ diagnostic x-ray

Low Dose Mode
Rapid scan time, Minimized dosage to patient

Auto Focus



Bitewings

TMJ



Cephalometric X-ray(Optional)

Various cephalometric x-ray options with auto landmark tracing feature*. Scan type & One-shot type available.

*Auto Tracing - Available with Willceph software purchase.



Function	CBCT + PANORAMA + Cephalometric X-ray(Scan type, Optional) + Model Scan + 3D Ceph Module
Focal Spot	0.5 mm
Scan Time	CBCT: 8 s or 12 s, 24 s, 36 s Panorama: 14 s or less / Bitewings: 8 s or less / TMJ: 6 s or less Cephalometric X-ray(Optional): 8 s or less(Scan Type) / 0.5 s ~ 2 s (One-Shot Type)
FOV size(DxH)	18 x 16.5 cm(Stitch), 16 x 9 cm(Non-Stitch), Free FOV (min. 3 x 3 cm)
Voxel Size(CT)	0.1 - 0.3 mm
Tube Voltage	60 kV - 90 kV
Tube Current	4 mA - 10 mA
Dimension(WxDxH)	DENTRI Max: 1201 mm x 1361 mm x 2455 mm (47.3" x 53.6" x 96.7") DENTRI C MAX: 1999 mm x 1361 mm x 2455 mm (78.7" x 53.6" x 96.7") DENTRI S MAX: 1941 mm x 1361 mm x 2455 mm (76.4" x 53.6" x 96.7")

Imaging

ECO-X



3D Imaging

MAX 16x9 cm FOV, perfect for capturing dentition, sinus, or TMJ

Bitewings

Extraoral bitewing images for better patient comfort

Model Scan Option

Model CBCT Scan for STL extraction

PANO with Autofocus

2D panoramic feature with Autofocus for minimized distortion

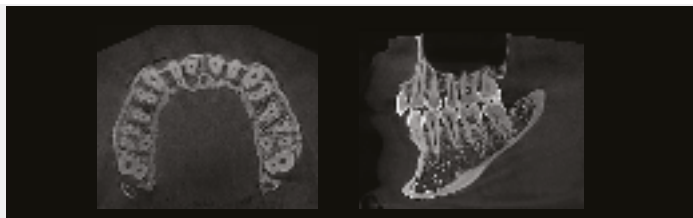
Cephalometric X-ray(optional)

Optional cephalometric arm attachment, excellent diagnostic images for orthodontic practice



Superior Image Quality

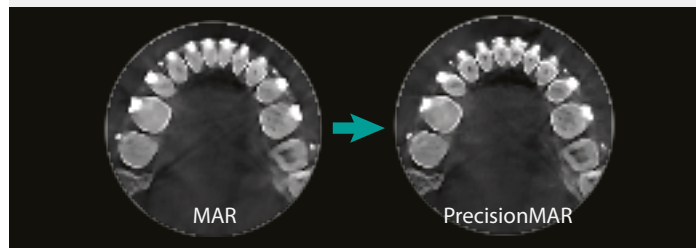
HDX WILL's state of the art imaging reconstruction algorithm finds the best value of each voxel and enhances image contrast and sharpness.



PrecisionMAR

PrecisionMAR™ offers unprecedented clarity around metal, improving diagnostics and planning.

- Minimal scatter
- Reduced shading artifact
- Clearly define bone and teeth structures around metal



CBCT FOV(Field of View) Size

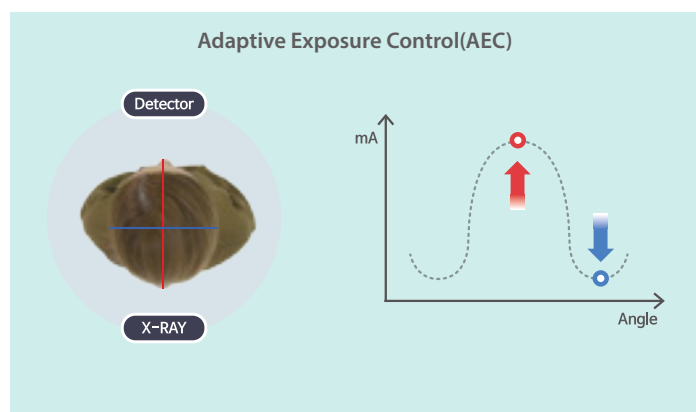
Wide 16x9 cm FOV allows for the entire dentition, TMJ, Nose, Ear or Pediatric dental arch to be captured in one scan. Various options are available from 3x3cm to 16x9cm FOV



Low Dose Radiation

An additionally equipped filter & Adaptive Exposure Control(AEC) technology significantly reduces radiation exposure. HDX WILL's imaging reconstruction still allows superior image quality.

Standard PANO
 CBCT scan with only HALF the dose of PANO scan
 *16x9 cm FOV with Ultra Low Dose & AEC ON



CBCT Panoramic Imaging FOV 16 x 9

Dedicated 2D Panoramic X-ray



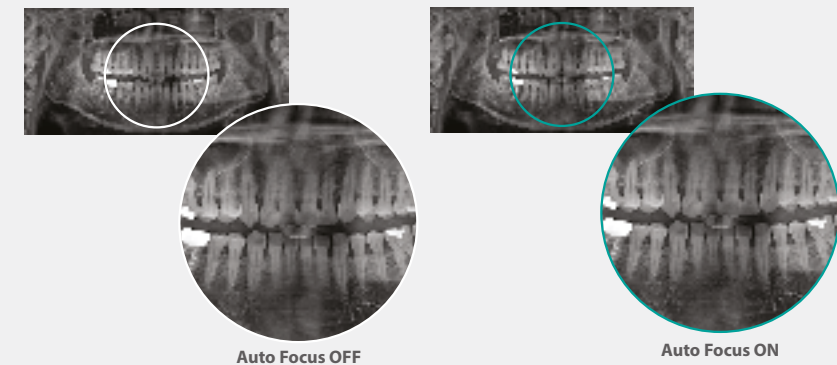
Auto Focus
 Minimized distortion, Maximized ability to obtain clear images

Bitewings
 Extraoral Bitewing options

TMJ
 TMJ diagnostic x-ray

Low Dose Mode
 Rapid scan time, Minimized dosage to patient

Auto Focus



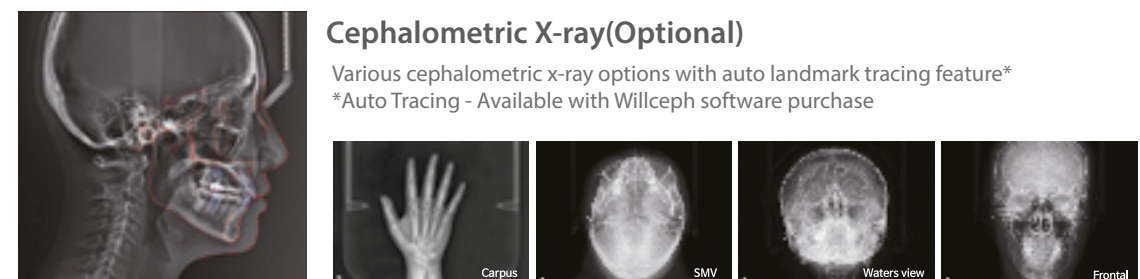
Bitewings

TMJ



Cephalometric X-ray(Optional)

Various cephalometric x-ray options with auto landmark tracing feature*
 *Auto Tracing - Available with Willceph software purchase



Function	CBCT + PANORAMA + Cephalometric X-ray(Scan type, Optional) + Model Scan
Focal Spot	0.5 mm
Scan Time	CBCT: 8 s or 12 s, 24 s
	Panorama: 14 s or less / Bitewings: 8 s or less / TMJ: 6 s or less
	Cephalometric X-ray(Optional): 8 s or less(Adult) / 6 s or less(Child)
FOV size(DxH)	16x9 cm or 12x9 cm, 10x8 cm(Child), Free FOV (Min. 3x3 cm)
Voxel Size(CT)	0.1 - 0.3 mm
Tube Voltage	60 kV - 90 kV
Tube Current	4 mA - 10 mA
Dimension(WxDxH)	Eco-X: 980 mm × 1225 mm × 2314 mm(38.6" × 48.3" × 91.1")
	Eco-X S: 1802 mm × 1225 mm × 2314 mm(71" × 48.3" × 91.1")



Fast Response High Image Quality

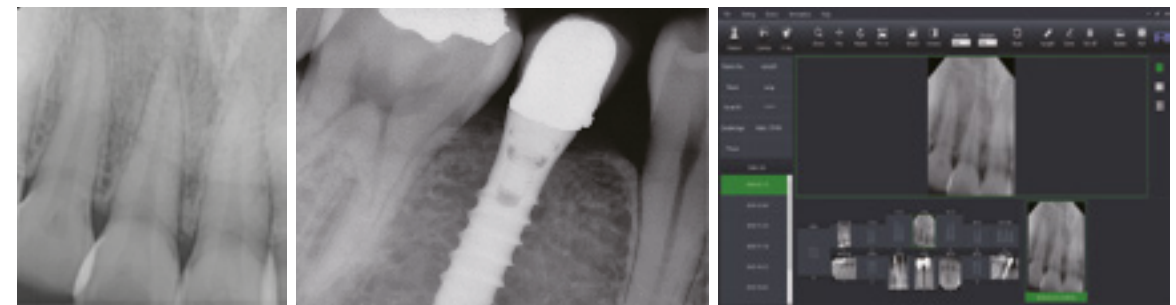
- CSI Scintillator
- High Resolution
- Advanced Image Processing Algorithm
- Easy to Use
- Increased Patient Comfortableness and Ergonomic Design
- Easy Connection Using Twain Driver.

DIGITAL INTRAORAL IMAGE SENSOR

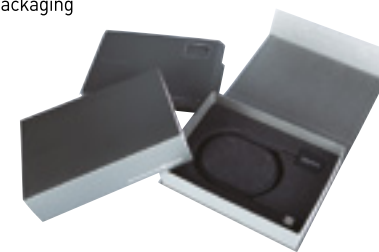


REVOLUTION IN
MEDICAL DEVICES

Intraoral Sensor 42 x 30 or 39 x 25



Product packaging



REMEDY SENSOR
Fast Response
High Image Quality

FEATURES

Image Quality

- Less graininess - Enhanced image
- Contrast resolution - Best at the penny test
- Spatial Resolution - 19-micron pixel size

Patient Comfort

- Ergonomic Design with round corners - 6.0mm radius
- Thin Sensor Plate - 5.4mm (less than 1/4")
- Low Profile Button - 6.0mm

Designed for Durability

- Thinner Cord - Direct USB from sensor plate to computer
- Sturdier Cord Jacket - Fewer wires enables greater protection
- Protected Against Fluids / Contaminants - Sealed cord / sensor junction
- Repair Option - Cord serviceability

Ergonomic Design

- Broad Range of Acceptable Exposure - Superior electronic gain control
- Sang-Resistant Cord - No interface box or cord bulge
- Easy Cleaning - Immiscible in glutaraldehyde and other disinfectants

SPECIFICATION

Parameter	IoDS-2401	IoDS-2402
Dimension (mm)	39 x 25	42 x 30
Image size (mm)	30 x 20	34 x 26
Image resolution (lp/mm)	25	
Pixel size (µm)	20	
Pixel pitch (µm)	20	
Total pixels (px)	1.5M	2.2M
Effective pixels (px)	1000 x 1500	1300 x 1700
Sensor technology	CMOS with Optical Fiber	
Scintillator	CsI (TI)	
Interface	USB 2.0 high speed	
Frame rate (fps)	1.4	1

REMEDY

Manufacturing : 69-14, Sakju-ro, Chuncheon-si, Gangwon-do, Korea
Head Office : 1408, IS BIZ Tower, 26 Yangpyeong-ro 21-gil, Yeongdeunpo-gu, Seoul, Korea
Tel : +82-2-2135-5888 Fax : 82-2-6968-2042 E-mail : sales@remedihc.com www.remehc.com



The **lightest** The **Smallest**
The **highest performance** of 70kV
Safe & Easy to use



REMEX

 **High Quality
Portable X-Ray Digital Camera**

- Conveniently transportable anywhere: office, surgery suites, humanitarian work
Easily take an x-ray anytime during procedures
- No cumbersome stands or cables
- Cordless, rechargeable batteries. More than 250 exposures per charge
- Lightweight, highly convenient. No motion artifacts; blur-free radiographs

Remex provides the best diagnostic imaging

REVOLUTION IN
MEDICAL DEVICES

Handheld X-Ray Camera



Convenient

Light weight, cordless, easily transportable
No awkward arms to manipulate; no drift
No need for special stands, cables, remotes
Hundreds of diagnostic quality images from a single battery charge

Sharp, clear images

Works with sensors, film, phosphor plates
0.4 mm focal spot produces sharp, high-resolution images

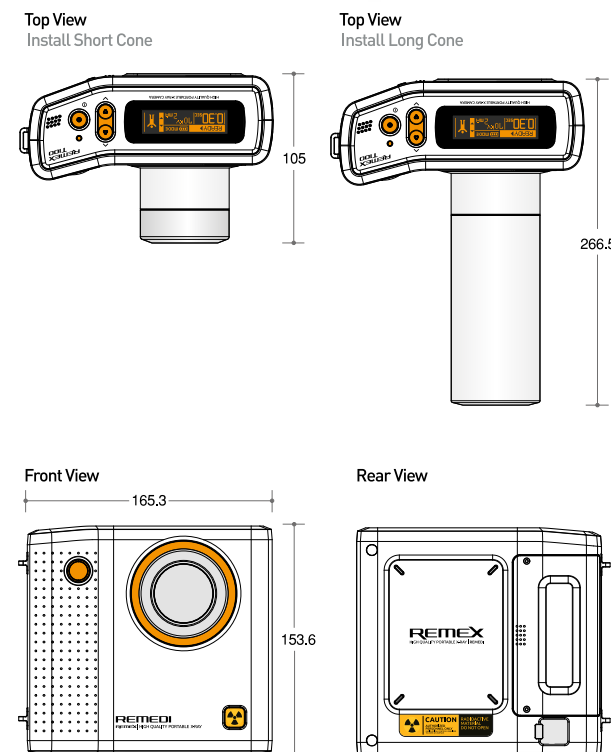
Safety

Low patient dosage
Internal shielding protect the operator
Studies show yearly operator exposure is equivalent to or less than exposure from a typical wall-mounted x-ray

REMEX

High Quality
Portable X-Ray Digital Camera

DRAWING



SPECIFICATION

Constant Potential High-Voltage Generator

Electrical

X-ray Tube Voltage	70 kV
X-ray Tube Current	2 mA
Focal Spot Value	0.4 x 0.4 mm
Output Power	140 W
Exposure Time	0.01 ~ 1.3 sec

Mechanical

Anode Angle	12.5 degrees
Inherent Filtration	At least 1.5 mmAl
X-ray Coverage	∅60 mm at SID 233 mm

Dimension

165.3 x 105 ~ 266.5 x 153.6 [WxDxH]

Weight

About 1.7 kg

Power requirement

Rechargeable Battery	
DC 11.1 v,	1500mAh
Charger	
Input	100~240 VAC, 50~60Hz, 0.5A
Output	12.6 Vdc, 1500mAh

REMEDI

Manufacturing : 69-14, Sakju-ro, Chuncheon-si, Gangwon-do, Korea
Head Office : 1408, IS BIZ Tower, 26 Yangpyeong-ro 21-gil, Yeongdeunpo-gu, Seoul, Korea
Tel : +82-2-6968-2044 Fax : +82-2-6968-2042

REVOLUTION IN MEDICAL DEVICES

Are Your Implant Cases in Trouble?



Are your patients suffering with?

- Peri-implantitis?
- Bone loss?
- Keeping prosthetics clean?

DentaKOTE™

Would you like to have more security in your cases?

- DentaKOTE™ can help protect your dentistry practice
- For use on teeth, prosthetics, and full arch cases



Visit ritterimplants.com/dentakote for additional details and watch the application process video.

855.807.8111 • orders@ritterimplants.com



DentaKOTE S™

NEW PRODUCT NOTIFICATION: DentaKOTE-S™
Provides patients instant root sensitivity relief.



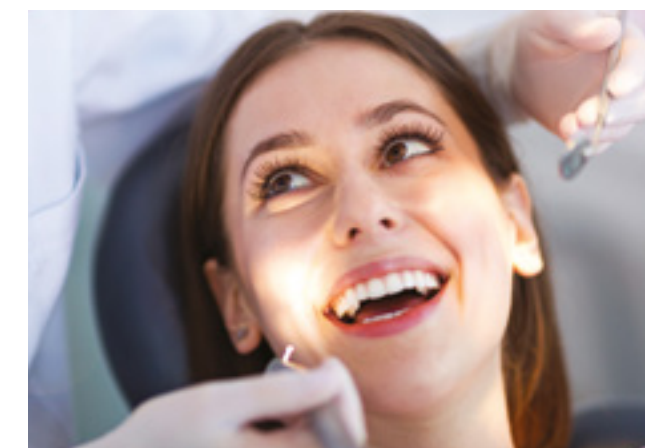
BLOCK PAIN INSTANTLY

Sensitive teeth are painful and pose a problem for many. Unfortunately, getting rid of the problem has always been a challenge. That is until now, thanks to DentaKOTE-S.

DentaKOTE-S is a revolutionary formula that is applied directly to sensitive tooth or teeth. It instantly stops and eliminates painful sensations.

Clinical studies using actual patients have repeatedly demonstrated the effectiveness of DentaKOTE-S in relieving painful sensations. Each patient experienced immediate and lasting relief. This is true for both young and old patients.

Ask your dental professional about DentaKOTE-S today and find out for yourself what living pain-free is all about.



What is DentaKOTE-S?

It is an medical-grade polymer that is safe to use in the oral environment. Can be applied effortlessly and quickly to relieve the symptoms of sensitivity and more.

A single application has lasting effects. Reapplication is recommended at your subsequent recall visits.

How long does it last?

Patients who have had an application of DentaKOTE-S, are reporting the elimination of the sensitivity lasting for several months.

Is it expensive?

It is affordable and most dental insurances may assist with the cost. Ask your dentist or hygienist how to incorporate this into your regular dental routine.

What happens if it does not eliminate all the sensitivity?

In some instances, DentaKOTE-S may not work to relieve sensitive tooth/teeth issues. In these instances, there is most likely an underlying pathology that must be ruled out. Indeed, patients who are experiencing progressive gum recession will continue to have new root exposure. As such, they may be a candidate for additional applications.

DentaKOTE S™

Visit DentaKOTE.com for additional details and to watch the application process video.

For more information, call or email

1.800.852.1154 • info@dentakote.com

US - Essentials

DENTAL 2022/2023

High-Quality Dental and Surgical Instruments
for Dentists, Oral-Maxillofacial Surgeons,
Implantologists, Periodontists and Orthodontists.



Competence in Instruments
MADE IN GERMANY





Skilled and experienced surgical mechanics create top-quality instruments

MADE BY HAND

Technical Competence
with a long Family Tradition

Using selected raw materials and highly advanced machinery

FOR USE BY HAND

Quality that you can see and feel

Many different instruments developed in close collaboration with internationally renowned universities and opinion leaders



Member of the German Dental Manufacturers (VDDI)



Certified by DQS according to:
DIN EN ISO 13485
MDSAP



Competence in Instruments
MADE IN GERMANY

USTOMED:

Dental Instruments from Tuttlingen, the world-wide most important cluster for medical technology. USTOMED develops, designs, produces and distributes instruments for Dentists and, Oral-Maxillofacial Surgeons.

Keeping up-to-date:

A vast network and cooperations with internationally-known operators, universities and Key Opinion Leaders enables us to see new methods and standards earlier and react with developing solutions immediately.

You will profit from long-term experiences, excellent customer service and an incredible competence in the fields of instrument maintenance, sterilization and organization.

3 Great Reasons

USTOMED Instruments was founded over 45 years ago!

Our portfolio contains over **2.500 Products** for different fields in dentistry.

We have already equipped over **3.500 dental offices** world-wide!





UStoMED - CATERING & LOBBY



UStoMED - EDUCATION

01	SCALPELS AND PERIOTOMES	P.	50-55
02	SCISSORS	P.	53-60
03	MICRO-INSTRUMENTS	P.	61-70
04	TWEEZERS	P.	71-78
05	NEEDLE HOLDERS	P.	79-88
06	WOUND AND CHEEK RETRACTORS	P.	89-100
07	ELEVATORS	P.	101-104
08	SUCTION TUBES AND MEASURING INSTRUMENTS	P.	105-108
09	SINUS CURETTES	P.	109-112
10	AUGMENTATION	P.	113-124
11	ROOT ELEVATORS, LUXATORS AND DESMOTOMES	P.	125-130
12	CONTAINER SYSTEMS AND WASH TRAYS	P.	131-135

INFO:
Also available with
a smooth handle
02-030-150 G



1/1

02-030-030

Blade Holder, No. 3

125mm



1/1

02-030-150

Blade Holder, round-shaped

150mm



1/1

02-038-140

Micro-Blade holder,
ergon. grip

140mm

01

Scalpels and Periotomes

02

SCISSORS



02-790-000
Periotome, Fig. 1, complete
170mm



02-791-000
Periotome, Fig. 2, complete
140mm

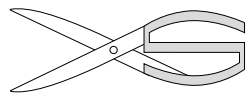


02-790-001
Periotome Blade, only
Fig. 1, straight

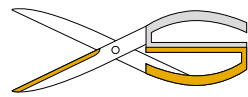


02-791-001
Periotome Blade, only
Fig. 2, angled

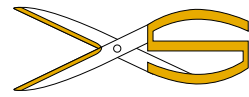




STANDARD:
Standard Cut



SUPERCUT (SC):
Special Cut with tothing in one scissor blade in order to prevent sliding of gum and suture material




TUNGSTEN CARBIDE (TC):
Special Hard-Metal Inlays increasing life time and sharpness, of the Instrument



1/1


METZENBAUM
dissect. Scissors, curved


 03-071-145
145mm Standard



1/1

METZENBAUM DELICAT
dissect. Scissors, curved

 03-081-145
145mm Standard

 03-081-145 SC
145mm Supercut



1/1


REYNOLDS
dissect. Scissors, curved

03-155-145
145mm Standard



1/1

JAMESON
dissect. Scissors, curved

 03-185-155
155mm Standard



<p><i>KELLY</i> Gum and Suture Scissors</p> <p>03-630-160 160mm, straight.</p> <p>03-630-180 180mm, straight.</p>	<p><i>KELLY</i> Gum and Suture Scissors</p> <p>03-631-160 160mm, curved</p> <p>03-631-160 SC 160mm, curved, Supercut</p>	<p><i>KELLY</i> Gum and Suture Scissors</p> <p>03-631-180 180mm, curved</p> <p>03-631-180 SC 180mm, curved, Supercut</p>
---	--	--

<p><i>JOSEPH</i> Gum and Suture Scissors</p> <p>03-440-140 140mm, straight.</p> <p>03-440-140 SC 140mm, straight, Supercut</p>	<p><i>JOSEPH</i> Gum and Suture Scissors</p> <p>03-441-140 140mm, curved</p> <p>03-441-140 SC 140mm, curved, Supercut</p>	<p><i>JOSEPH</i> Gum and Suture Scissors</p> <p>04-441-140 140mm, curved, TC</p> <p>04-440-140 140mm, straight, TC</p>
--	---	--

INFO:

The fine tips give these scissor blades a very slender shape and allow an optimal view of the operating environment. The toothed cutting blades are particularly suitable for cutting sutures.

extra large rings



Fox
Gum and Suture Scissors


Fox
Gum and Suture Scissors


Gum and Suture Scissors


LA GRANGE
Gum and Suture Scissors

Gum and Suture Scissors


Gum and Suture Scissors

 03-420-130
130mm, smooth, straight.


 03-421-130
130mm, smooth, curved.


 03-327-130
130mm, curved.


 03-401-105
115mm


 03-320-115
115mm, straight


 03-321-115
115mm, curved


 03-412-130
130mm, toothed, straight.


 03-417-130
130mm, toothed, curved.


 03-327-130 SC
130mm, curved., Supercut


 03-401-105 SC
115mm, Supercut

 03-320-115 SC
115mm, straight, Supercut

 03-321-115 SC
115mm, curved, Supercut

 03-417-130 SC
130mm, curved, Supercut.


 04-520-115
115mm, straight, TC


 04-521-115
115mm, curved, TC

02 Scissors




SPENCER
Ligature Scissors

 03-720-090
90mm

 03-720-130
130mm




BEEBEE
Wire/Plate Scissors

 03-744-105
105mm, straight, sharp tip



BEEBEE
Wire/Plate Scissors

 03-745-105
105mm, curved, sharp tip

03 MICRO-INSTRUMENTS





1/1

USTOMED
Gum and Sture Scissors

05-621-145
145mm, straight, sharp tip



1/1

BARRAQUER
Micro-Scissors

05-809-145
145mm, curved, round handles

05-809-180
180mm, curved, round handles

INFO:
The round-shaped handle enables a much easier twisting of the instrument in the hand.



1/1

USTOMED I'MOTION
Micro-Scissors

05-803-180
180mm

INFO:
The very slim and curved cutting edges are particularly well suited for the de-epithelialization and connective-tissue corrections.

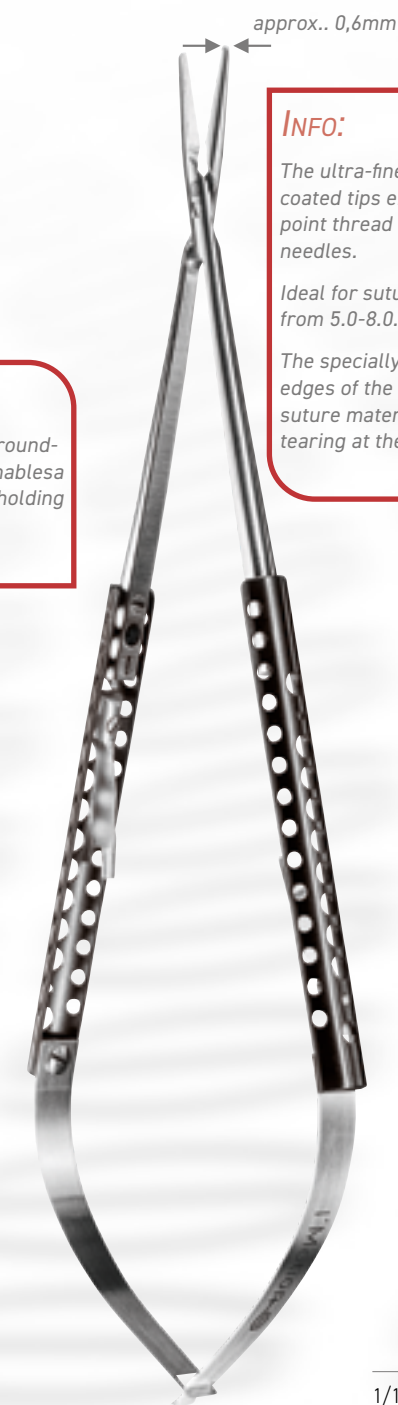


1/1

USTOMED I'MOTION
Micro-Tweezers

09-280-180
180mm, straight, Cooley-grip

INFO:
The additionally rounded Cooley grip enables a very atraumatic holding of the tissue.



1/1

USTOMED I'MOTION
Micro-Needle Holder

20-752-180
180mm, straight, diamond-coated tips

20-753-180
180mm, curved, diamond-coated tips

INFO:
The ultra-fine diamond-coated tips enables a pinpoint thread of the suture needles.
Ideal for suture material from 5.0-8.0.
The specially-rounded edges of the tips prevent suture materials from tearing at the knot.

approx. 0,6mm



straight



curved

S CASTROVIEJO
Micro-Needle Holder TC

20-680-180
180mm, straight

S CASTROVIEJO
Micro-Needle Holder TC

20-680-140
140mm, straight

20-681-140
140mm, curved



straight



curved

S CASTROVIEJO
Micro-Needle Holder TC

20-722-130
130mm

20-722-160
160mm

20-722-180
180mm

S BARRAQUER
Micro-Needle Holder TC

20-710-140
140mm, straight


20-711-140
140mm, curved


S BARRAQUER
Micro-Needle Holder TC


20-710-180
180mm, straight

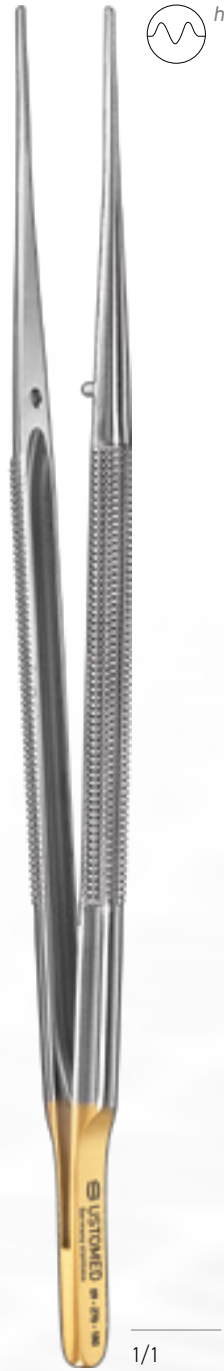
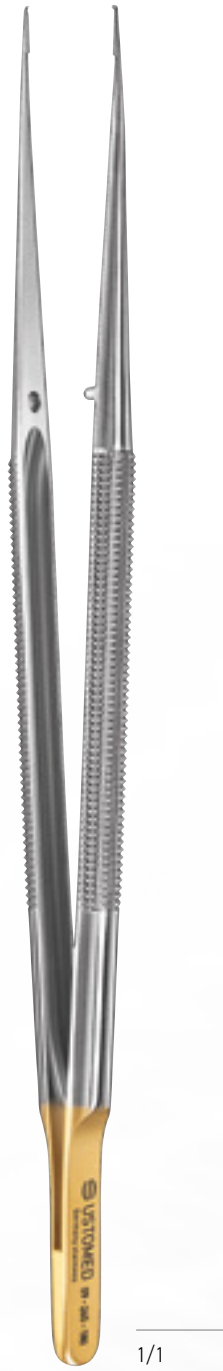
20-711-180
180mm, curved


INFO:
Perfect for holding suture materials

 highly magnified

 1,6mm

 **CARBON-COATING**
The special plasma-carbon coating increases the surface-durability of the working tips and ensures a glare-free work under the microscope.



 **USTOMED**
Micro-Tweezers
09-230-180
anatomical,
diamond-coated
180mm

USTOMED
Micro-Tweezers
09-265-180
surgical
180mm

09-267-180
surgical, curved

DeBAKEY
Micro-Tweezers
09-270-180
atraumatic
180mm

USTO-SOFT GRIFF
Papillae Elevator
85-812-000
atraumatic
175mm

USTOMED
Papillae Elevator
85-812-175
atraumatic
175mm

 **ZUCHELLI**
Papillae Elevator
85-814-175
175mm



1/1

NORTH-CAROLINA
Perio Probe
85-691-115
CP15, Probe
190mm



1/1

USTO-SOFT GRIIP
Perio Dissector
85-808-000
Mod.W.
185mm



1/1

USTOMED
Perio Dissector
85-808-175
Mod.W.
170mm



1/1

KASAJ
Tunneling Knife.
85-818-001
200mm



1/1

KASAJ
Tunneling Knife.
85-818-002
190mm

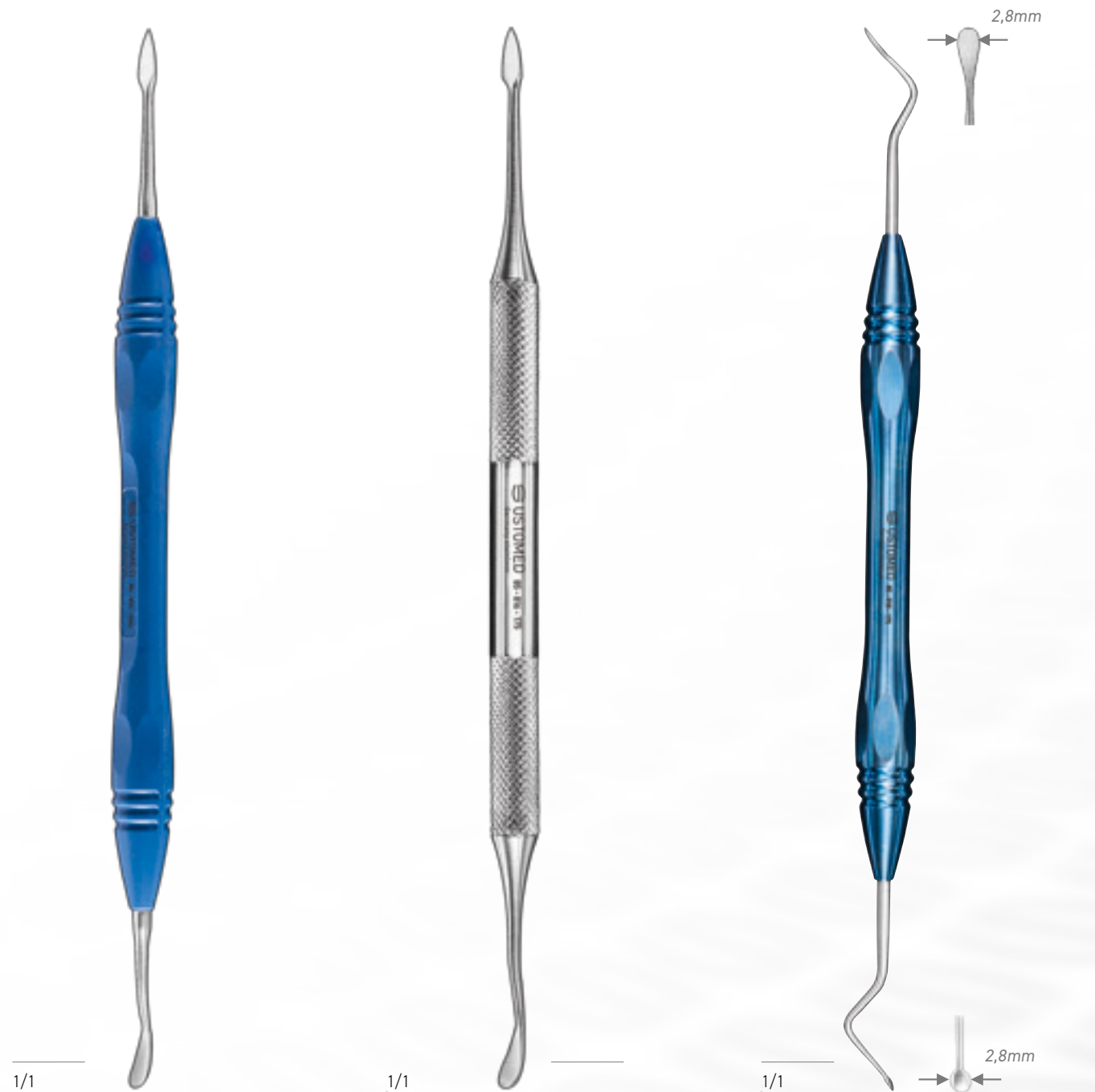


1/1

MODELL-B.
Tunneling Knife.
85-816-170
Micro B.
170mm

03 Micro-Instruments

04 TWEEZERS



USTO-SOFT GRIP
Raspatory
85-816-000
Mod.B.
175mm

USTOMED
Raspatory
85-816-175
Mod.B.
175mm

USTOMED
Tunneling Knife
85-818-175
175mm



USTOMED
Anatomical Tweezers

08-036-145
130mm

08-036-160
160mm

08-036-180
180mm



ADSON
Tweezers

08-060-120
120mm, anatomical

08-060-150
150mm, anatomical




COLLEGE
Anatomical Tweezers

10-825-150
130mm

10-825-160
160mm

10-825-180
180mm



 COLLEGE
Anatomical Tweezers

10-827-150
150mm, diamond-coated



COLLEGE
Anatomical Tweezers

10-829-150
150mm, with contra angle

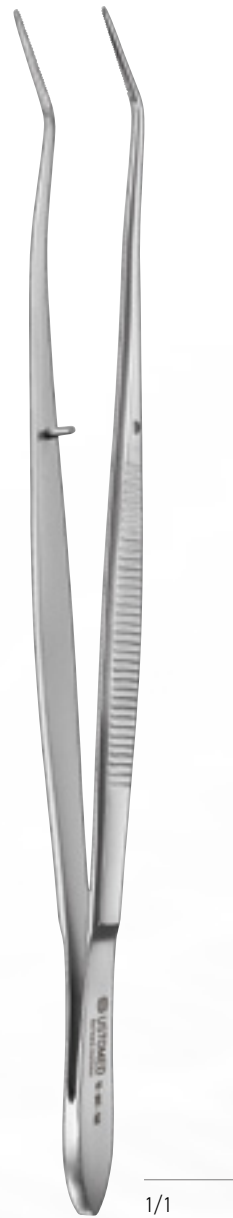


1/1

COLLEGE
Tweezers

10-801-150
150mm, anatomical

10-803-150
150mm, plain



1/1

MERIAM
Tweezers

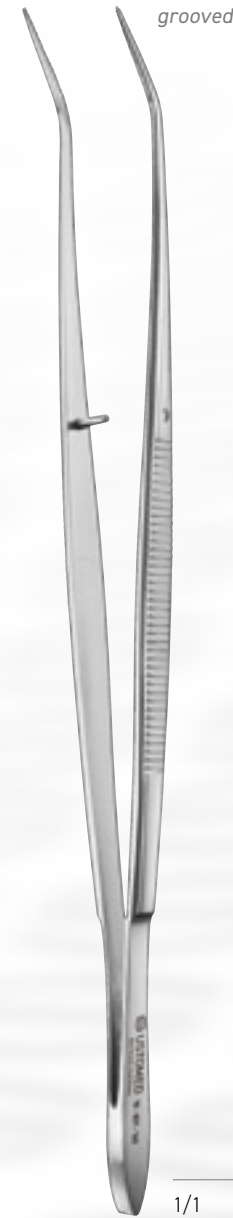
10-841-160
160mm, grooved



1/1

MERIAM
Tweezers

10-845-155
155mm, modified



1/1

FLAGG
Tweezers

10-831-160
160mm, grooved



1/1

GERALD
Surgical Tweezers

08-301-175
175mm, straight



1/1

Surgical Tweezers

08-235-145
145mm, delicate

08-235-160
160mm, delicate

08-235-180
180mm, delicate



1/1

ADSON
Tweezers

08-261-120
120mm, surgical

08-261-150
150mm, surgical

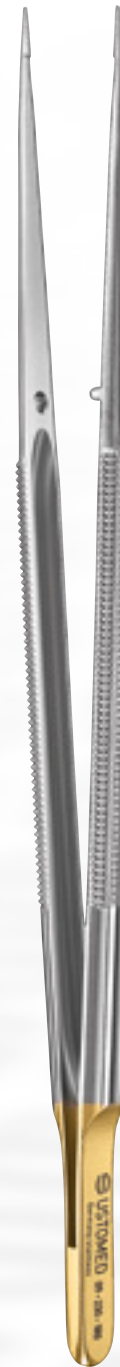


1/1

USTOMED I'MOTION COOLEY
Micro-Tweezers

09-280-180
180mm, atraumatic,
Cooley-grip

INFO
More Details
on page 19



1/1

 USTOMED
Micro-Tweezers

09-230-180
180mm, anatomical,
diamond-coated

INFO:
Perfect for
holding suture
materials



1/1

USTOMED
Micro-Tweezers

09-265-180
180mm, surgical, straight

curved version
possible

09-267-180
180mm, surgical, curved



1/1

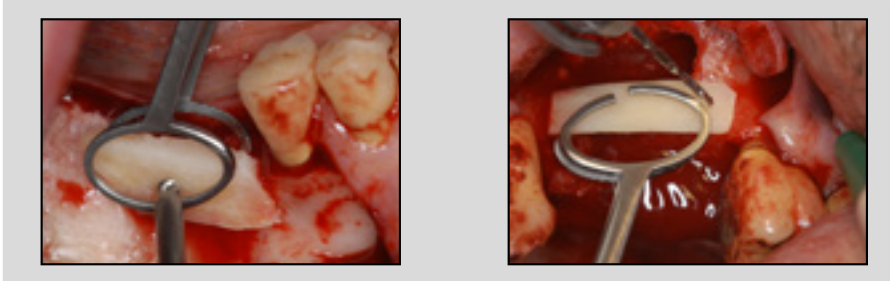
DeBAKEY
Micro-Tweezers

09-270-180
180mm, atraumatic

 highly magnified

04 Tweezers

Photo Copyright Dr. Ponte



Graft Tweezers
with opening for sutures

10-871-160
160mm

PONTE
Bone Block Tweezers


10-877-160
180mm
small

05 NEEDLE HOLDERS



INFO
 Overview on suture material sizes per Needle Holder on page 44.



 **HALSEY**
Needle Holder TC


20-120-130
130mm



 **BABY-CRILE-WOOD**
Needle Holder TC

20-160-150
150mm




 **CRILE-WOOD**
Needle Holder TC

20-164-150
150mm

20-164-180
180mm




 **MAYO-HEGAR**
Needle Holder TC

20-220-160
160mm

20-220-180
180mm




 **MICRO-RYDER**
Needle Holder TC

20-320-130
130mm

20-320-150
150mm




 **LANGENBECK**
Needle Holder TC

20-392-160
160mm

20-392-180
180mm



 **TOENNIS**
Needle Holder TC

20-398-180
180mm



INFO:
The inwards-bended lock prevents the glove from pinching.



INFO
More details on page 19.



MATHIEU
Needle Holder TC

LICHTENBERG
Needle Holder TC

USTOMED I'MOTION
Micro-Needle Holder

CASTROVIEJO
Needle Holder TC

20-452-140
140mm

20-470-170
170mm

20-752-180
180mm, diamond-coated, straight

20-722-130
130mm

20-452-170
170mm

20-753-180
180mm, diamond-coated, curved


20-722-160
160mm

20-452-200
200mm

20-722-180
180mm



1/1


 **CASTROVIEJO**
Micro-Needle Holder TC

20-680-140
140mm, straight

20-680-180
180mm, curved




1/1

 **CASTROVIEJO**
Micro-Needle Holder TC

20-681-140
140mm, curved



1/1


 **BARRAQUER**
Micro-Needle Holder TC

20-710-140
140mm, straight

20-710-180
180mm, curved



1/1

 **BARRAQUER**
Micro-Needle Holder TC

20-711-140
140mm, curved

20-711-180
180mm, curved

05

Needle Holders

Matrix - Needle Holders and Suture Material Sizes:

	3/0	4/0	5/0	6/0	7/0	8/0
20-120-130	✓	✓	✓	✗	✗	✗
20-160-150	✗	✓	✓	✗	✗	✗
20-164-150	✓	✓	✓	✗	✗	✗
20-164-180	✓	✓	✓	✗	✗	✗
20-164-205	✓	✓	✓	✗	✗	✗
20-220-160	✓	✓	✗	✗	✗	✗
20-220-180	✓	✓	✗	✗	✗	✗
20-220-200	✓	✓	✗	✗	✗	✗
20-320-130	✗	✗	✓	✓	✗	✗
20-320-150	✗	✗	✓	✓	✗	✗
20-320-180	✗	✗	✓	✓	✗	✗
20-392-160	✓	✓	✓	✗	✗	✗
20-392-180	✓	✓	✓	✗	✗	✗
20-392-200	✓	✓	✗	✗	✗	✗
20-398-180	✓	✓	✗	✗	✗	✗
20-452-140	✓	✓	✗	✗	✗	✗
20-452-170	✓	✓	✗	✗	✗	✗
20-452-200	✓	✓	✗	✗	✗	✗
20-470-170	✓	✓	✗	✗	✗	✗
20-680-140	✗	✗	✓	✓	✓	✗
20-681-140	✗	✗	✓	✓	✓	✗
20-680-180	✗	✗	✓	✓	✓	✗
20-681-180	✗	✗	✓	✓	✓	✗
20-710-140	✗	✗	✓	✓	✓	✗
20-711-140	✗	✗	✓	✓	✓	✗
20-710-180	✗	✗	✓	✓	✓	✗
20-711-180	✗	✗	✓	✓	✓	✗
20-722-130	✗	✗	✓	✓	✓	✗
20-722-160	✗	✗	✓	✓	✓	✗
20-722-180	✗	✓	✓	✓	✗	✗
20-752-180	✗	✗	✓	✓	✓	✓
20-753-180	✗	✗	✓	✓	✓	✓

06

WOUND AND CHEEK RETRACTORS





KILNER
Tissue Retractor
24-421-150
150mm



GILLIES
Tissue Retractor
24-425-001
180mm



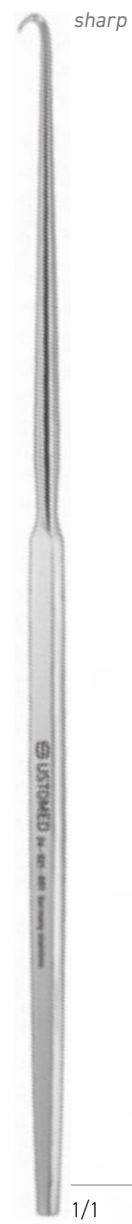
GILLIES
Tissue Retractor
24-425-002
180mm



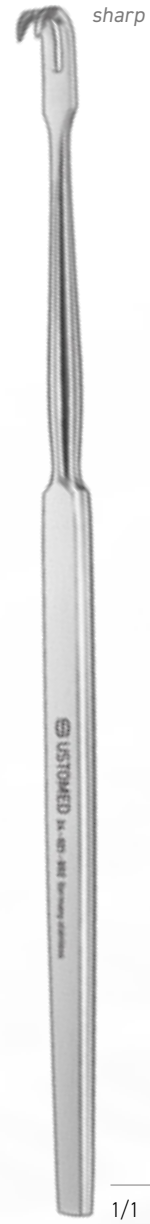
GUTHRIE
Tissue Retractor
24-469-002
130mm



JOSEPH
Tissue Retractor
24-573-002
160mm



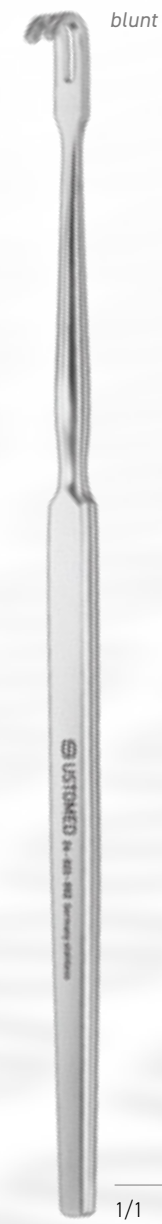
Wound Retractor
24-021-001
single fork
160mm



Wound Retractor
24-021-002
dual fork
160mm



Wound Retractor
24-023-001
single fork
160mm



Wound Retractor
24-023-002
dual fork
160mm



3/4

NENTWIG
Zygomatic Retractor
24-191-230

230mm



3/4

KOCHER
Wound Retractor
24-179-103

240mm



24-169-001

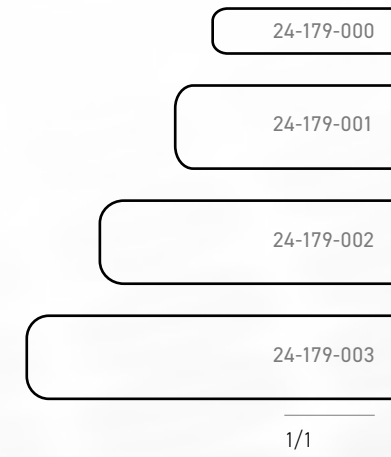
24-169-002

24-169-003

24-169-004

24-169-005

1/1



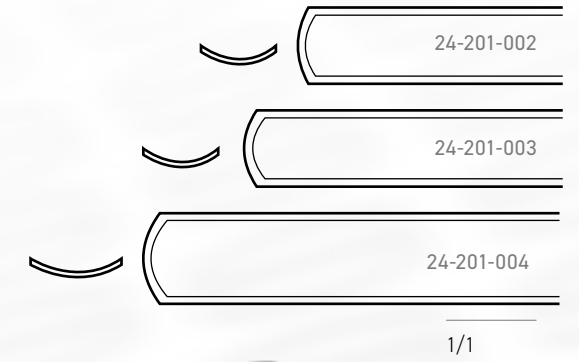
24-179-000

24-179-001

24-179-002

24-179-003

1/1



24-201-002

24-201-003

24-201-004

1/1



1/2

LANGENBECK
Wound Retractor

210mm



1/2

KOCHER
Wound Retractor

210mm



1/2

OBWEGESER
Wound Retractor

240mm



Silicone-Mouth Wedge
for children
48-091-001

Size 1

Silicone-Mouth Wedge
for adults
48-091-002

Size 2



USTOMED
Universal Mouth Gag, complete
48-149-000

130mm



for children
only 48-149-001

1/1



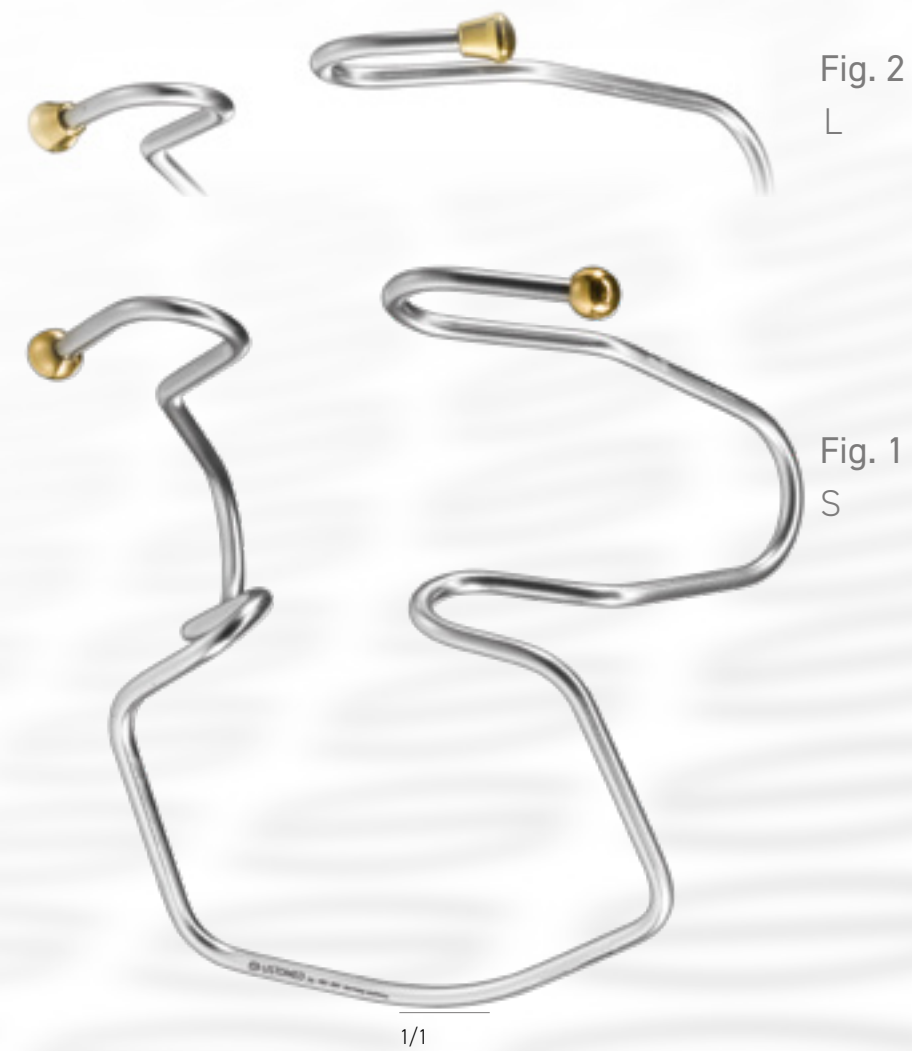
for adults
only 48-149-002

1/1



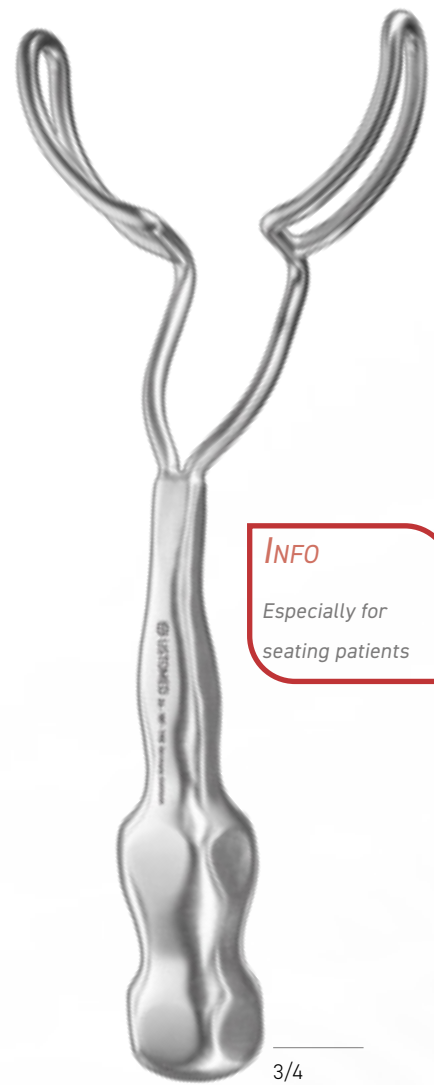
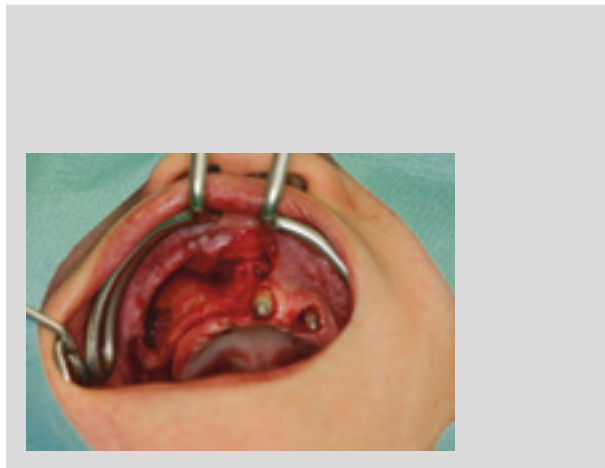
LASTER
Special Wound Retractor
for upper third molars
24-203-105

110mm

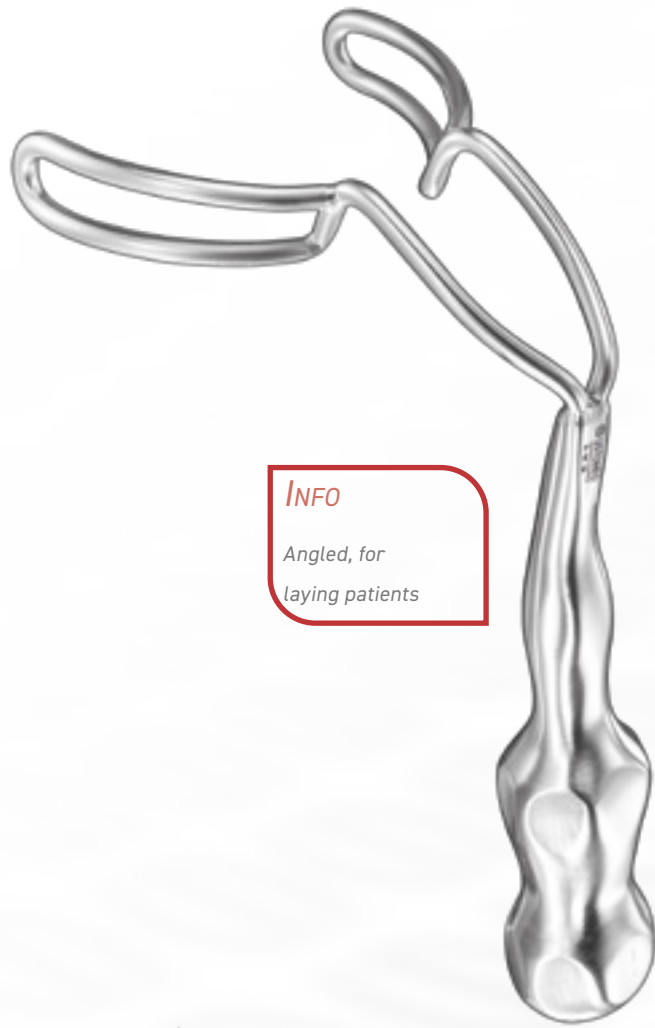


HILGER
Mouth Clamp
24-197-001, Fig. 1
24-197-002, Fig. 2

06 Wound/Cheek Retractors



INFO
Especially for
seating patients



INFO
Angled, for
laying patients

USTOMED
Universal Vestibule Retractor
24-187-190
straight
190mm

USTOMED
Universal Vestibule Retractor
24-189-180
angled
180mm

07 ELEVATORS AND RASPATORIES





FREER
Elevator
27-451-180
180mm



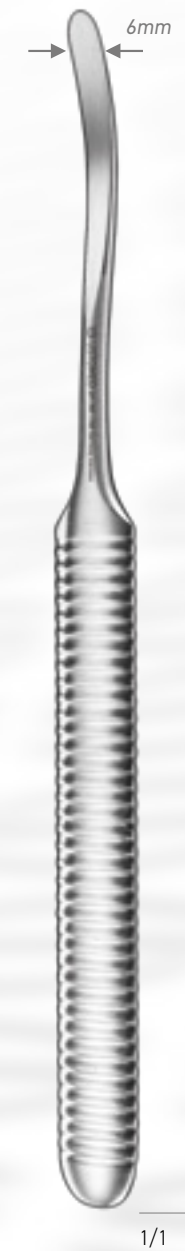
PRICHARD
Raspatory
27-459-175
175mm



GLICKMAN
Raspatory
27-711-024
165mm



USTOMED
Raspatory
27-717-175
175mm



WILLIGER
Raspatory
27-741-160
160mm



WILLIGER
Raspatory
27-745-160
160mm

07 Elevators and Raspatories



WILLIGER
Raspatory
27-743-130

130mm



OBWEGESER
Raspatory
27-749-006

175mm



08 SUCTION TUBES AND MEASURING INSTRUMENTS





Filters
38-505-003
3 pcs/pack



Bone Trap
Stainless Suction Attachment
38-505-000

110mm

1/1

INFO
1,5mm inner diameter
2,5mm outer diameter



1/1

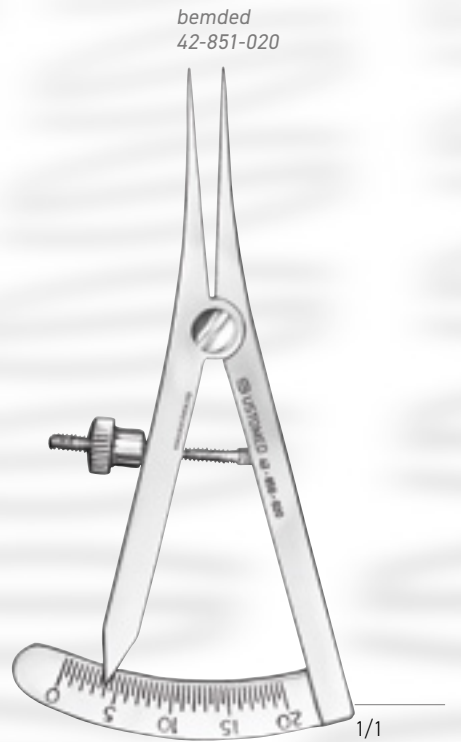
Suction Tube
38-519-015
metal
180mm

INFO
with Luer lock



1/1

KHOURY
Suction Tube
38-527-000
metal
170mm



bended
42-851-020

1/1

CASTROVIEJO
Caliper
42-850-020

85mm



SUCTION TUBE
METAL

38-517-002
180mm, 2mm diameter

38-517-003
180mm, 3mm diameter

38-517-004
180mm, 4mm diameter

38-517-005
180mm, 5mm diameter





1/1

HOTZ
Sinus Curette Fig. 1
46-695-001
185mm



1/1

HOTZ
Sinus Curette Fig. 2
46-695-002
190mm



1/1

KHOURY
Sinus Curette Fig.3
46-695-003
180mm



1/1

KHOURY
Sinus Curette Fig. 4
46-695-004
180mm



1/1

HOTZ
Sinus Curette Fig. 5
46-695-005
205mm



1/1

NENTWIG
Sinus Curette Fig. 1
46-699-001
Usto-Soft-Grip
180mm

09 Sinus Currettes



1/1

NENTWIG
Sinus Curette Fig. 2
46-699-002
Usto-Soft-Grip
190mm



1/1

NENTWIG
Sinus Curette Fig. 3
46-699-003
Usto-Soft-Grip
190mm



1/1

NENTWIG
Sinus Curette Fig. 4
46-699-004
Usto-Soft-Grip
190mm

10

AUGMENTATION





MINI-LAMBOTTE
Osteotome
67-554-004 S
130mm



MINI-LAMBOTTE
Osteotome
67-554-006 S
130mm



MINI-LAMBOTTE
Osteotome
67-554-008 S
130mm



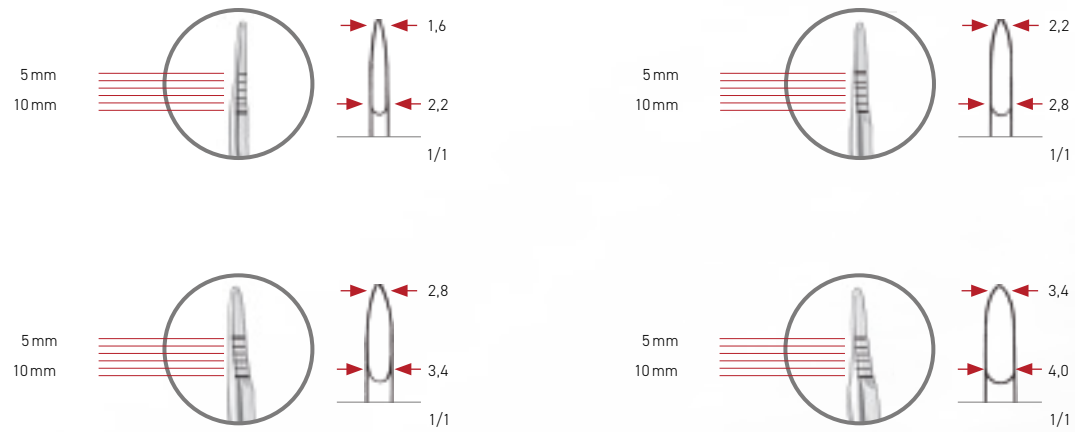
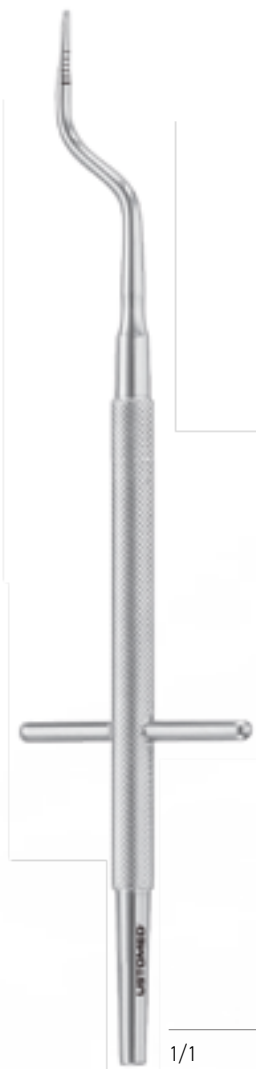
MINI-LAMBOTTE
Osteotome
67-555-004 S
130mm



MINI-LAMBOTTE
Osteotome
67-555-006 S
130mm



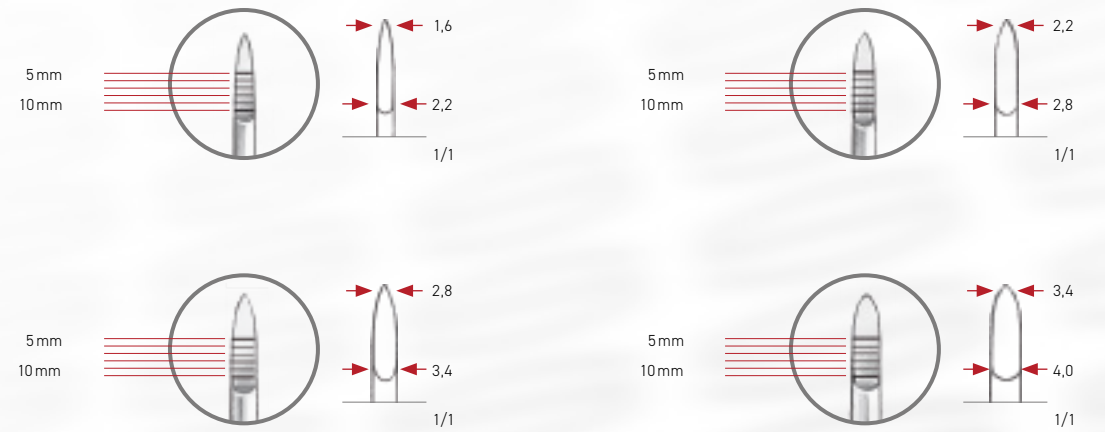
MINI-LAMBOTTE
Osteotome
67-555-008 S
67-555-010 S
130mm



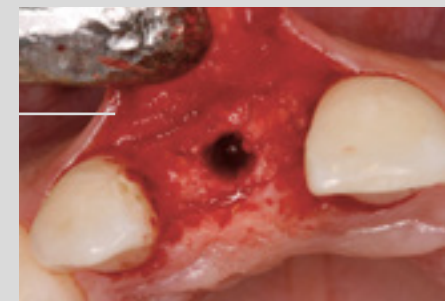
Condensing: preparation of the implant site when bone structure is compromised



NENTWIG
 Bone Spreader Set, bayonet
 67-559-444
 Set incl. 4 instruments
 175mm



Localized spreading of the narrow ridge



NENTWIG
 Bone Spreader Set, straight
 67-558-444
 Set incl. 4 instruments
 175mm



INFO
exchangeable
teflon inlays

1/1

Mallet
67-636-210
185mm. 210g



1/1

Mallet
67-660-150
165mm. 150g



1/1

OMBREDANNE
Mallet
67-670-270
260mm, 720g



Photo Copyright Dr. Ponte



1/1

USTOMED
Bone Crusher
67-680-000
round

USTOMED Bone Mill



USTOMED BONE MILL
SET S

67-682-002

USTOMED BONE MILL
SET M

67-682-003

USTOMED BONE MILL
SET L

67-682-004



Cutting Cylinder S
67-682-012



Cutting Cylinder M
67-682-013



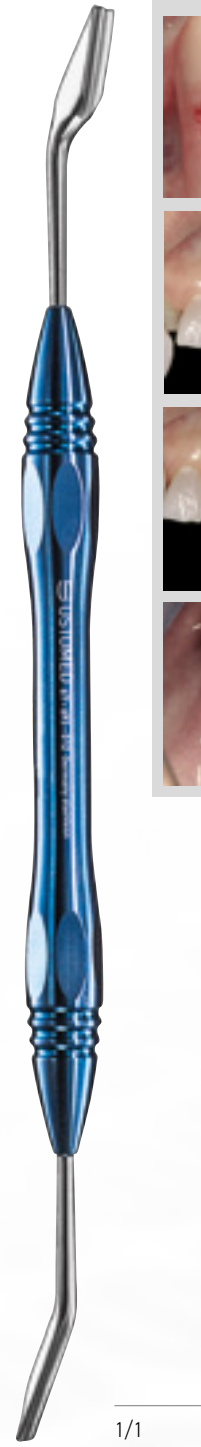
Cutting Cylinder L
67-682-014



Collection Container
67-682-020



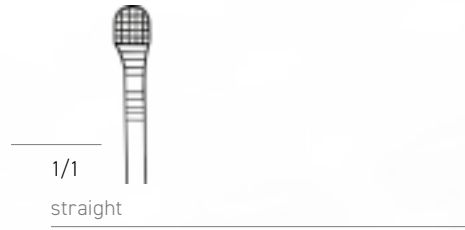
Bone Scraper
85-802-305
3mm and 5mm width
170mm



DEGIDI Plugger
67-693-012
190mm



DEGIDI Plugger
67-693-034
190mm



NENTWIG Bone-Fixation Forceps
31-196-000
130mm



10

Augmentation



1/1

Luer
Bone Rongeur
31-379-150

150mm



1/1

FRIEDMAN
Bone Rongeur
31-321-140

140mm

11

ROOT ELEVATORS, LUXATORS AND DESMOTOMES





BEIN
Root Elevator
83-100-002
straight
140mm



BEIN
Root Elevator
83-100-003
straight
140mm



BEIN
Root Elevator
83-100-004
straight
140mm



Bein
Root Elevator
83-100-005
straight
140mm



BEIN
Root Elevator
83-111-025
curved
140mm



BEIN
Root Elevator
83-111-035
curved
140mm



BEIN
Root Elevator
83-111-045
curved
140mm



BEIN-LUXATOR
Luxator
83-120-003
delicate, straight
140mm



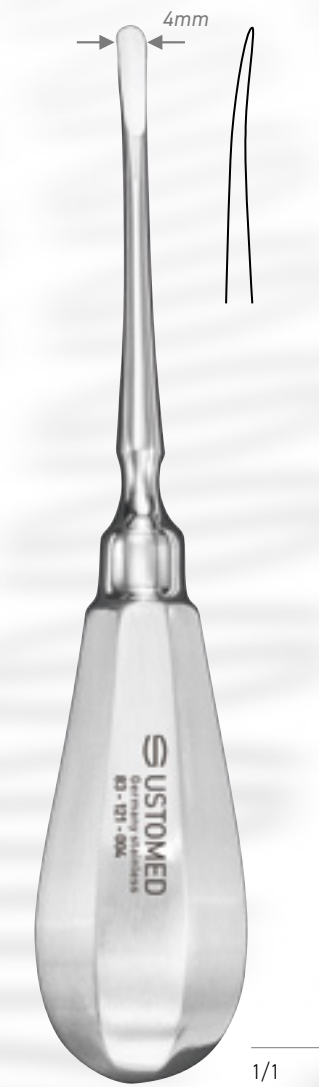
BEIN-LUXATOR
Luxator
83-120-004
delicate, straight
140mm



Bein-Luxator
Luxator
83-120-005
delicate, straight
140mm



BEIN-LUXATOR
Luxator
83-121-003
delicate, curved
140mm



BEIN-LUXATOR
Luxator
83-121-004
delicate, curved
140mm

11

Root Elevators, Luxators and Desmotomes

12

CONTAINER SYSTEMS AND WASH TRAYS



1/1

BEIN-LUXATOR
Luxator
83-121-005
delicate, curved
140mm



1/1

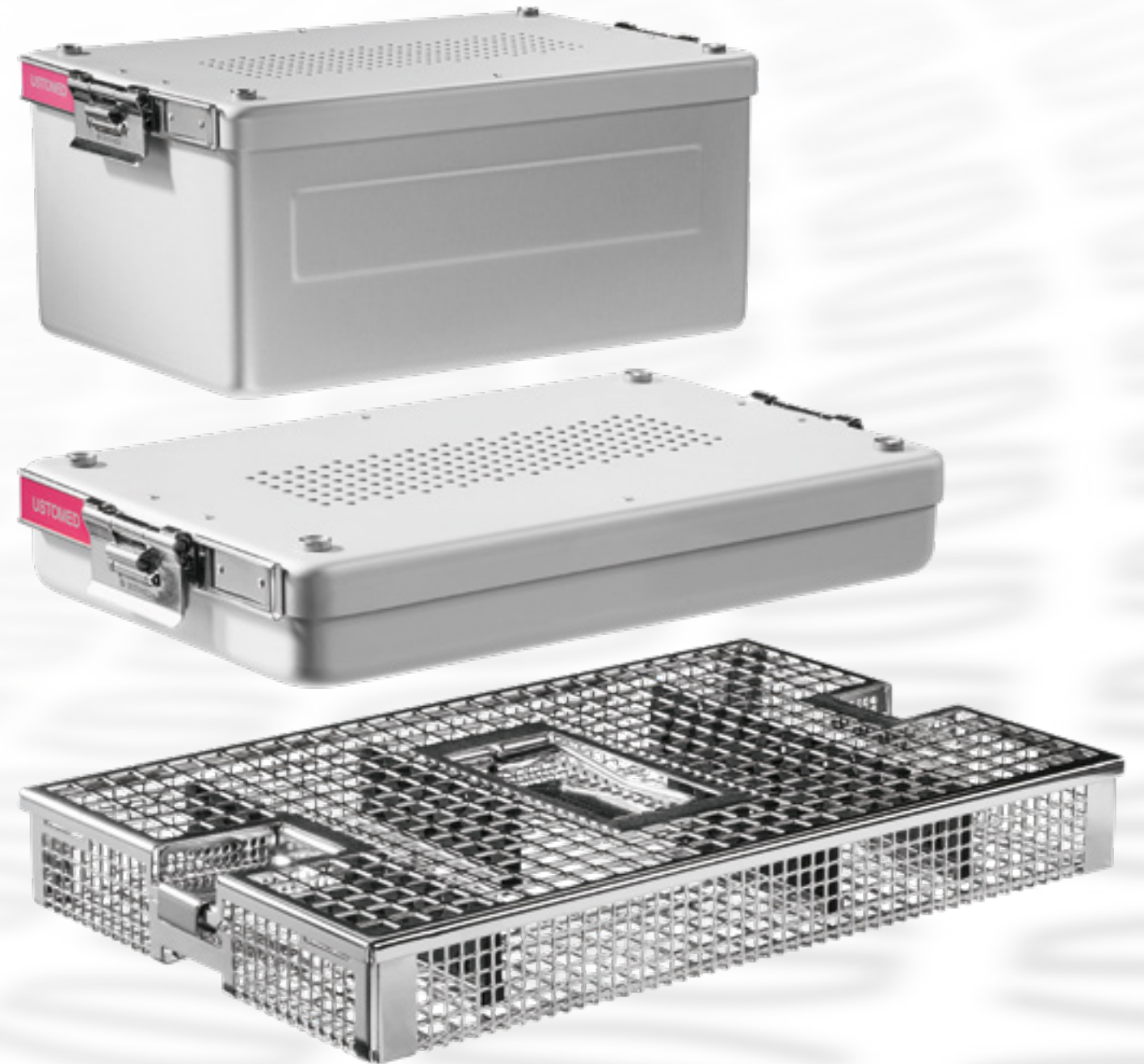
Desmotome
83-904-000
straight
145mm



1/1

Desmotome
83-905-001
angled, right
140mm

83-905-002
angled, left
140mm





Sterilization-Container
90-618-040
315 x 190 x 40mm



Sterilization-Container
90-618-065
315 x 190 x 65mm



Sterilization-Container
90-618-130
315 x 190 x 130mm



Paper filters
90-126-100

Marking Plates,
including labeling



90-650-000 red



90-650-001 blue



90-650-002 green



90-650-003 yellow



90-650-004 black



90-650-005 silver



Plate Holder
90-652-000



Seals
90-665-100
(pack contains 100 pcs.)

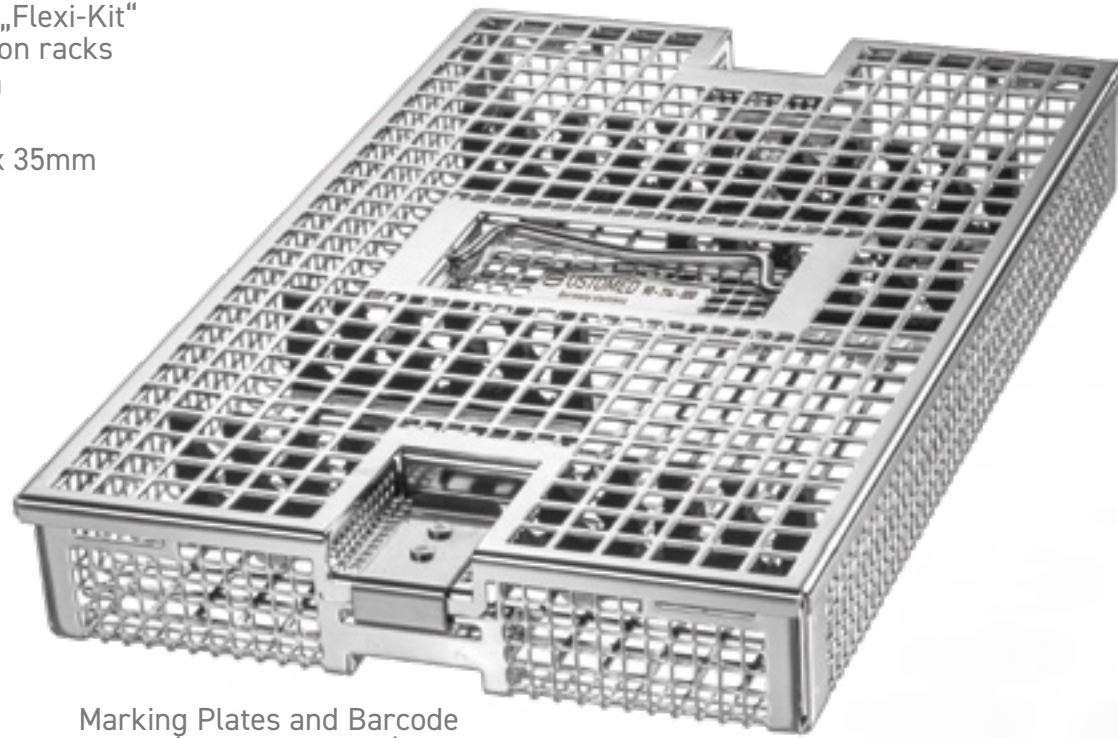


Marking Plate, HIBC, (Data Matrix)
90-654-000

or
Marking Plate, HIBC,
Code 128 (Barcode)
90-656-000

Wash tray „Flexi-Kit“
with 5 silicon racks
90-714-000

270 x 170 x 35mm



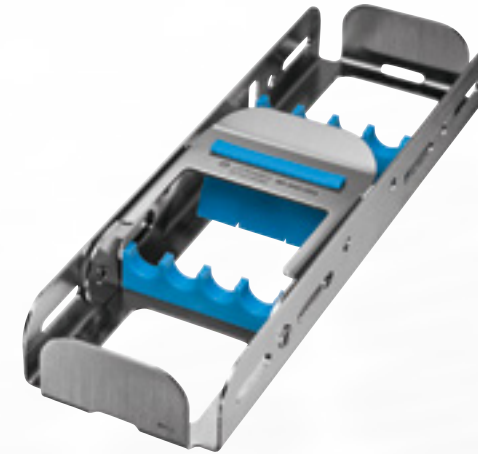
Marking Plates and Barcode
Plates (refer to page 91)

Wash tray MK 3
with cross-wise racks
90-716-001

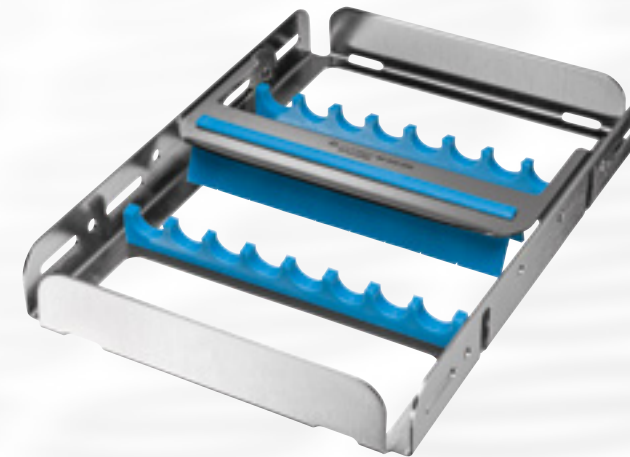
Wash tray MK 3
with longitudinal racks
90-716-002



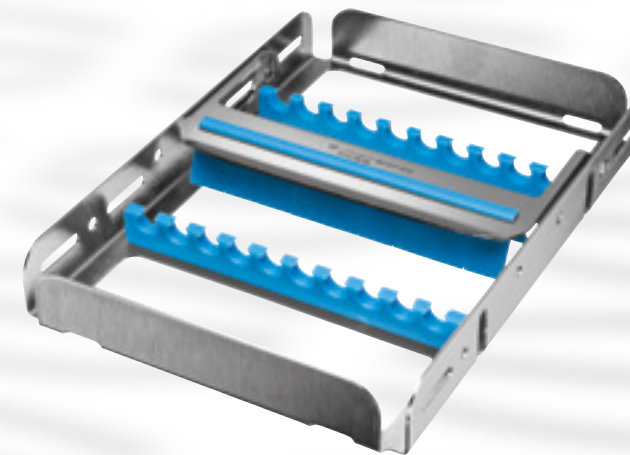
Sterilization and Collection Tray
for 4 instruments, half-size
90-340-004



Sterilization and Collection Tray
for 8 instruments, half-size
90-340-008



Sterilization and Collection Tray
for 10 instruments, half-size
90-340-010



Notes



Notes



USTOMED INSTRUMENTE
Ulrich Storz GmbH & Co. KG

Bischof-Sproll-Straße 2
78532 Tuttlingen / Germany

Manufacturer for Surgical and
Dental Instruments

Phone: +49 (0) 74 61 / 9 65 85 0
Fax: +49 (0) 74 61 / 9 65 85 65

info@ustomed.de
www.ustomed.de

The Ritter SB/LA-Implant System offers a wide range of selected sizes and prosthetic components. This includes the Narrow Line with 3.0 and 3.3 Diameters and Platform Shifting features for all Implants and Abutments to assist a perfect soft tissue management.

Get our latest Catalog and more information at www.ritterimplants.com



1. PICK YOUR IMPLANT PACKAGE

25 IMPLANT PACKAGE

50 IMPLANT PACKAGE

100 IMPLANT PACKAGE

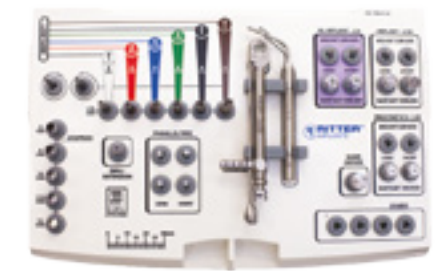
2. PICK YOUR IMPLANT SIZES

				5.0	6.0	
		3.75	4.2			6
3.0	3.3					8
						10
						11.5
						13
						16

WRITE AMOUNT IN EACH CELL

LENGTH (mm)

FREE KIT INCLUDED
Compact Surgical Kit



3. ADD OR UPGRADE SURGICAL KIT

ADD THIS KIT
Complete Surgical Kit



ADD FOR

UPGRADE FOR

ADD THIS KIT
Fully Guided Surgical Kit



ADD FOR

UPGRADE FOR



Worldwide

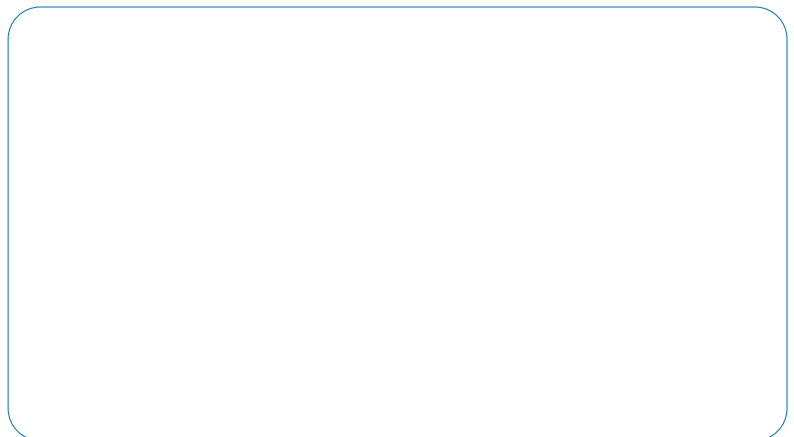
Ritter Dental™



Ritter Dental USA
4310 West Ave
San Antonio, TX 78213
Phone: 855.807.8111
Fax: 800.831.5973
www.RitterDentalUSA.com

Manufacturer:
Ritter Concept GmbH //
Ritter Implants GmbH & Co. KG
Freiburger Str. 45, 88400 Biberach
GERMANY
www.ritterconcept.com
www.ritterimplants.com

Your Ritter-Partner:



C22-0000-2301EN